



# ICSU & ICAS 2025

Joint Conference of 2025 International Conference Stroke Update  
and International Conference on Intracranial Atherosclerosis

November 27(Thu)-29(Sat), 2025  
Paradise Hotel Busan, Korea

**PROGRAM BOOK**



Hosted by



Endorsed by





C O N T E N T S

Welcome Message	03
Conference Overview	04
Organizing Committee	04
Conference Information	06
Program at a glance	10
Detailed Program	13
Poster Session	26
Sponsors List	40
Exhibition Layout	41

Welcome Message

Dear colleagues and friends,

On behalf of the Korean Stroke Society, we are delighted to welcome you to Joint Conference of 2025 International Conference Stroke Update and International Conference on Intracranial Atherosclerosis (ICSU&ICAS 2025).

In previous years, the ICSU was held as an independent conference. This year, we are excited to host ICSU jointly with ICAS, creating a more comprehensive and enriching program. By combining the strengths and expertise of both conferences, we believe that this year’s event will offer an even greater opportunity for participants to learn, share, and discuss the latest research results with leading professionals in the field.

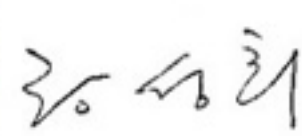
ICSU & ICAS 2025 aims to provide up-to-date and practical knowledge, as well as share academic achievements related to stroke research. World-leading scholars are invited to present state-of-the-art lectures and to share their perspectives in this field.

We are confident that ICSU & ICAS 2025 will be valuable and beneficial to all participants and will advance scientific standards and quality in our field. The organizing committee will also arrange opportunities to socialize and network with colleagues and friends from Korea and other countries.


Once again, we welcome you to ICSU&ICAS 2025, and please share your valuable expertise with us and enjoy the programs prepared for you at the conference.

Sincerely,



  
**Seong Hee Hwang**  
Congress Chair, Korean Stroke Society



  
**Jong S. Kim**  
Co-chair, ICAS

Conference Overview

TITLE	Joint Conference of 2025 International Conference Stroke Update and International Conference on Intracranial Atherosclerosis (ICSU&ICAS 2025)
DATE	November 27 (Thu) to 29 (Sat), 2025
VENUE	Paradise Hotel Busan, Korea
HOSTED BY	The Korean Stroke Society
ENDORSED BY	Asia Pacific Stroke Organization, European Stroke Organization, World Stroke Organization
OFFICIAL LANGUAGE	English
WEBSITE	www.strokeupdate-kss.org

Organizing Committee

Advisory Board	Jae-Kyu Roh	Seoul National University
	Byung-Woo Yoon	Eulji University
	Kwang Ho Lee	Professor Emeritus, Sungkyunkwan University
	Chin-Sang Chung	Dr. Chung’s Neurology & Headache Clinic.
	Byung-Chul Lee	Hallym University
Congress Chair	Sung-Hee Hwang	Hallym University
	Jong S. Kim	University of Ulsan
President	Gyeong-Moon Kim	Sungkyunkwan University
Secretary General	Bum Joon Kim	University of Ulsan
Treasurer	Seong Hoon Lim	The Catholic University
Executive Committee	Eung-Gyu Kim	Inje University
	Joung-Ho Rha	Inha University
	Ji Hoe Heo	CHA University
	Hee-Joon Bae	Seoul National University
	Keun-Sik Hong	Inje University

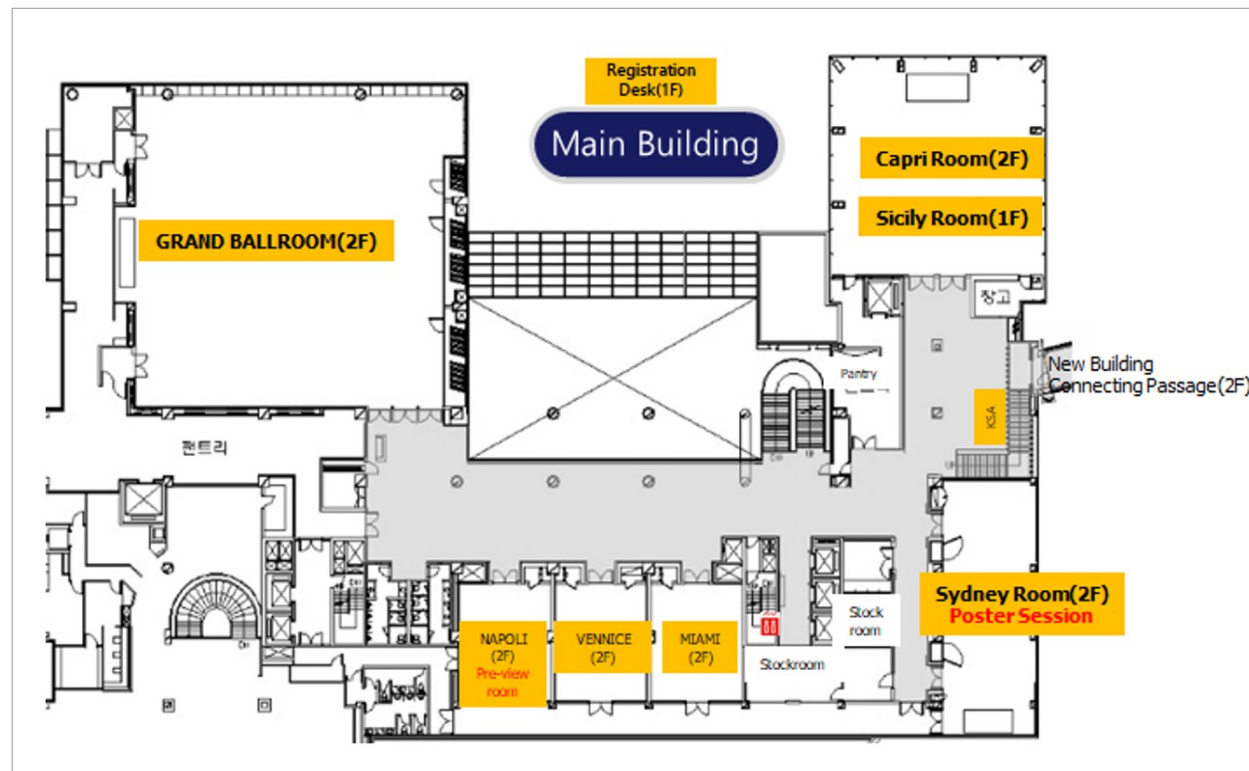
Executive Committee	Jae-Kwan Cha	Dong-A University
	Yong-Jae Kim	Kim’s Neurology Clinic
Scientific Committee Chair	Woo-Keun Seo	Sungkyunkwan University
Scientific Committee	Jin Man Jung	Korea University
	Jinkwon Kim	Yonsei University
	Bum Joon Kim	University of Ulsan
	Darda Chung	Korea University
	Jae Sung Lim	University of Ulsan
	Chi Kyung Kim	Korea University
	Hyo Suk Nam	Yonsei University
	Hee Kwon Park	Inha University
	Jay C. Choi	Jeju National University
	Mi Sun Oh	Hallym University
	Won Hyuk Chang	Sungkyunkwan University
	Hae Woong Jeong	Inje University
	Mi-Yeon Eun	KYUNGPOOK NATIONAL UNIVERSITY
	Seong ho Park	Inje University
	Joon Nyung Heo	Chung-Ang University
	Hye seon Jeong	CHUNGNAM NATIONAL UNIVERSITY
	Sang joon An	CATHOLIC KWANDONG UNIVERSITY
	Min Woo Lee	Hallym University
	Janghyun Baek	Sungkyunkwan University
	Jieun Roh	Pusan National University

*\*Listed by last name in alphabetical order*

## Conference Information

### Floor Plan

2F, Paradise Hotel Busan, Main Building



### Registration Desk

LOCATION	DATE	OPERATION HOURS
1F Lobby	November 27 (Thu)	07:00-18:00
	November 28 (Fri)	07:30-18:00
1F Sicily Foyer	November 29 (Sat)	07:30-17:00

### On-site Registration

Category	Member	Member (2026년 연회비 납부자)	Non member	Non-Korean nationals
M.D.	KRW 250,000	KRW 230,000	KRW 350,000	USD 250
Trainee	Waived			USD 130
*Allied Health Professionals	KRW 70,000			USD 70
One Day (Nov. 27.28&29)	KRW 30,000 (Trainee & Allied Health Professionals ONLY)			USD 30
Accompanying Person	KRW 70,000			USD 70

\* Allied Health Professionals indicate nurse, paramedical person and technician etc.

### (For Korean) 대회 연수평점


대한의사협회 연수교육 지침에 따라 실제 세션을 수강하신 시간에 비례하여 평점이 인정됩니다.

구분	내용
취득 가능 평점	11월 27일(목): 최대 6평점 11월 28일(금): 최대 6평점 11월 29일(토): 최대 6평점 ➔ 3일 최대 18평점 이수 가능
평점 인정 기준 (세션 수강 기준)	<div>                         ▶ 1시간 미만: 1평점 인정 불가                          ▶ 1시간 이상 ~ 2시간 미만 ➔ 1평점                          ▶ 2시간 이상 ~ 3시간 미만 ➔ 2평점                          ▶ 3시간 이상 ~ 4시간 미만 ➔ 3평점                     </div> <div>                         ▶ 4시간 이상 ~ 5시간 미만 ➔ 4평점                          ▶ 5시간 이상 ~ 6시간 미만 ➔ 5평점                          ▶ 6시간 이상 ➔ 6평점 (1일 취득 가능 최대 평점)                     </div>
주의 사항	- 학술대회 입장과 퇴장 시 반드시 QR 코드를 접촉해야 합니다. (1일 2회 이상) - 체류시간 확인은 QR코드 접촉 시, 평점 기기 화면에서 확인 가능합니다. - 체류시간 누락 시, 등록데스크로 문의하여 주시기 바랍니다.



Name Tag & QR Code Attendance System

Name tag will be used as passes. You are kindly requested to wear your name tag throughout the conference period.

NAME TAG	
	<p>The data will be used to improve the quality of future conference. Please make sure that you arrive on time at your sessions and have your name tag scanned before entering the session room.</p> <p>To expedite the onsite registration process, please bring a printout of your QR code registration information to the registration desk. If you forget to bring the QR code form with you, please give the registration staff your full name or registration number.</p>

Certificate of Attendance

If you need certificate of attendance, please contact to ICSU&ICAS 2025 Secretariat (info@strokeupdate-kss.org) with your full name and registration number.

Internet Access

You can use Wi-Fi in Paradise Hotel Busan.

WI-FI NAME	Paradise BQ
SERVICE PLACE	Paradise Hotel Busan
TARGET	Visitors with mobile devices (Smartphones, Tablets, Laptops, etc.)
HOW TO USE	When Setting Wi-Fi, select ‘Paradise BQ’

Preview Room

Please visit the Preview Room at least 1 hour before your session starts to upload and verify that your presentation file works well on our AV system.

LOCATION	DATE	OPERATION HOURS
2F, Napoli, Paradise Hotel Busan	November 27 (Thu)	07:00-18:30
	November 28 (Fri)	07:30-18:30
2F, Capri Foyer, Paradise Hotel Busan	November 29 (Sat)	07:30-14:00

Poster Room

The poster presentation and exhibition will be held in Sydney(2F). You can freely visit Sydney to view the posters during the operation hours on November 27 (Thu) - 28 (Fri), 2025. Additionally, you are welcome to attend the Poster Session where all poster presenters will briefly introduce their abstract including Q&As.

If you are a poster presenter, please refer to the schedule below.

CATEGORY	POSTER SESSION 1 November27 (Thu)	POSTER SESSION 2 November27 (Thu)	POSTER SESSION 3 November28 (Fri)	POSTER SESSION 4 November28 (Fri)
Poster Exhibition	08:00 - 10:00	13:00 - 16:00	10:00 - 13:50	17:40 - 19:00
Poster Mounting	07:00 - 08:00	12:00 - 13:00	09:00 - 10:00	15:00 - 16:00
Poster Session	08:00 - 08:50	13:00 - 13:50	13:00 - 13:50	17:40 - 19:00
Poster Removal	10:00 - 11:00	16:00 - 17:00	13:00 - 14:00	19:00 - 19:30

Exhibition

LOCATION	EXHIBITION HOURS
2F, Lobby, Paradise Hotel Busan	November 27 (Thu), 08:00 - 18:40
	November 28 (Fri), 08:00 - 17:30

Program at a Glance

Day 1: November 27(Thu)

Room	Room A (Grand Ballroom)	Room B (Capri)	Poster Room (Sydney)
8:00			[Poster Session 1]
9:00	[Symposium 1] Stroke prevention	[Scientific Session 1]	
10:00	Coffee Break (10:40-11:00)		
11:00	[Plenary Session 1]		
12:00	[Luncheon Symposium 1] DAEWOOONG BIO INC.	[Luncheon Symposium 2] Chong Kun Dang Pharm	
13:00	[Satellite Symposium 1] Viatris korea	[Satellite Symposium 2] Organon	[Poster Session 2]
	Coffee Break (13:30-13:50)		
14:00	[Symposium 2] Acute stroke Management	[Scientific Session 2]	
15:00	Coffee Break (15:30-15:50)	MYUNG IN PHARM Coffee Break (15:30-15:50)	
16:00	[Focus Session] Clinical Practice Guidelines	[Sponsored Scientific Session] MYUNG IN PHARM	
17:00	Break (17:30-17:50)	[Clinical Trial Session]	
18:00	[Sponsored Workshop Session 1] Hanmi Pharm (KOR)	[Sponsored Workshop Session 2] BORYUNG	

Day 2: November 28(Fri)

Room	Room A (Grand Ballroom)	Room B (Capri)	Room C & Poster Room (Sicily & Sydney)
8:00	[Sponsored Workshop Session 3] Mitsubishi Tanabe Pharma Korea	[Sponsored Workshop Session 4] Pfizer	
9:00	[Symposium 3] BTC	[Scientific Session 3]	
10:00	Coffee Break (10:40-11:00)		
11:00	[Plenary Session 2]		
12:00	[Luncheon Symposium 3] Sanofi-Aventis Korea	[Luncheon Symposium 4] Amgen Korea	
13:00	[Satellite Symposium 3] Korea Otsuka Pharm.	[Satellite Symposium 4] SAMJIN PHARM.	[Poster Session 3]
	Coffee Break (13:30-13:50)		
14:00	ICAS Symposium 1 Epidemiology and Stroke Mechanisms	[Scientific Session 4]	[Other Special Sessions] Remodeling of Acute Stroke Care System (Sicily) (KOR)
15:00	Coffee Break (15:30-15:50)		
16:00	ICAS Symposium 2 Vessel Assessment	[Other Special Sessions] Debate Session (KOR)	
17:00			
18:00	Presidential Dinner (Invitation Only)		[Poster Session 4]

Detailed Program

Day 3: November 29(Sat)

Room	Room A (Capri)	Room B (Sicily)	Room C (Sydney)
8:00	[Symposium 4] NeuroRehabilitation	ICAS Symposium 3 Treatment	
9:00			
10:00	[Plenary Session 3]		
	Coffee Break (10:40-11:00)		
11:00	[Symposium 5] Anti-amyloid Therapy and Stroke (Joint Session of KSS and VasCog-Korea)	ICAS Symposium 4 Other Intracranial Vascular Diseases	Nursing Symposium (KOR)
12:00			
13:00	[Luncheon Symposium 5] Daiichi-Sankyo, DAEWOONG	[Luncheon Symposium 6] SK chemicals	
		Break (13:40-14:00)	
14:00		[한국뇌졸중유전체 연구회 심포지엄] (14:00-15:55) (KOR)	
15:00			
		Coffee Break (15:55-16:15)	
16:00		[GENESIS-K Symposium] (16:15-18:00) (KOR)	
17:00			

Day 1: November 27(Thu)

09:00 - 10:40	<b>Symposium 1: Stroke Prevention</b> [Chairs] Sun U. Kwon (Asan Medical Center, Korea) Lung Chan (Taipei Medical University, Taiwan)	<b>Grand Ball- room(2F)</b>
09:00 - 09:20	<b>Optimal Antithrombotic Strategy for Prevention of Atherosclerotic Stroke</b> Bum-Joon Kim (B) (Asan Medical Center, Korea)	
09:20 - 09:40	<b>New Era for Prevention of Cardioembolic Stroke</b> Young-Seo Kim (Hanyang University Hospital, Korea)	
09:40 - 10:00	<b>Non-Statins Lipid Lowering Therapy for Stroke Prevention</b> Cheng-Yang Hsieh (Tainan Sin Lau Hospital, Taiwan)	
10:00 - 10:20	<b>Diabetic Control for The Secondary Stroke Prevention</b> Jeong-Min Kim (Seoul National University Hospital, Korea)	
10:20 - 10:40	<b>Panel Discussion and Q&amp;A</b> [Panelists] Hyun-Goo Kang (Jeonbuk National University Hospital, Korea) Mi-Yeon Eun (Kyungpook National University Chilgok Hospital, Korea) Hyuk-Seong Kwon (Hanyang University Guri Hospital, Korea)	
10:40 - 11:00	Coffee Break	
11:00 - 12:00	<b>Plenary Session 1</b> [Chairs] Sung-Hee Hwang (Kangnam Sacred Heart Hospital, Hallym University, Korea)	<b>Grand Ballroom + Capri (2F)</b>
11:00 - 12:00	<b>Update on Embolic Strokes of Undetermined Source: Implications for Clinical Practice and Research</b> George Ntaios (Internal Medicine First Propedeutic Department of Internal Medicine, AHEPA Hospital, Aristotle University of Thessaloniki, Greece)	
12:00 - 13:00	<b>Luncheon Symposium 1 (DAEWOONG BIO INC.)</b> [Chair] Kwang Ho Lee (Sungkyunkwan University School of Medicine, Korea)	<b>Grand Ballroom (2F)</b>
12:00 - 15:50	<b>The Role of Cerebrolysin in Ischemic Stroke Recovery</b> Da Eun Jeong (VHS Medical Center, Korea)	
12:50 - 13:00	Q&A	
13:00 - 13:30	<b>Satellite Symposium 1 (Viatris Korea)</b> [Chair] Dae-Il Chang (Gachon University Gil Medical Center, Korea)	<b>Grand Ballroom (2F)</b>
13:00 - 13:30	<b>Evolving Strategies in LDL-C Management for Stroke Patients: Based on the 2025 ESC/EAS Guidelines</b> Jun young Chang (Asan Medical Center, Korea)	
13:30 - 13:50	Coffee Break	

13:50 - 15:30	<b>Symposium 2: Acute stroke Management</b> [Chairs] Eung-Gyu Kim (Inje University Busan Paik Hospital, Korea) Byung Moon Kim (Severance Hospital, Korea)	<b>Grand Ballroom (2F)</b>
13:50 - 14:15	<b>Thrombectomy for Medium Vessel Occlusion</b> JoonNyung Heo (Severance Hospital, Korea)	
14:15 - 14:40	<b>Preventing the No-Reflow Phenomenon: Role of Adjunctive Therapies in Endovascular Treatment</b> Bernard Yan (Royal Melbourne Hospital, Australia)	
14:40 - 15:05	<b>Efficacy and Safety of Tenecteplase in Acute Ischemic Stroke</b> Tae Jung Kim (Seoul National University Hospital, Korea)	
15:05 - 15:30	<b>Comparison of Balloon Guide Catheters and Standard Guide Catheters for Acute Ischemic Stroke</b> Woosang Jung (Ajou University Hospital, Korea)	
15:30 - 15:50	<b>Coffee Break</b>	
15:50 - 17:30	<b>Focus Session : Clinical Practice Guidelines</b> [Chairs] Jay Chol Choi (Jeju National University Hospital, Korea) Sung Chun Tang (National Taiwan University Hospital, Taiwan)	<b>Grand Ballroom (2F)</b>
15:50 - 16:15	<b>Recent Updated Guidelines for HTN</b> Hye Seon Jeong (Chungnam National University Hospital, Korea)	
16:15 - 16:40	<b>Iv Tenecteplase Guidelines</b> Jun-Tae Kim (Chonnam National University Hospital, Korea)	
16:40 - 17:05	<b>Moyamoya Disease Guidelines</b> Miki Fujimura (Department of Neurosurgery Hokkaido University, Japan)	
17:05 - 17:30	<b>Panel Discussion and Q&amp;A</b> [Panelists] Jin-Man Jung (Korea University Ansan Hospital, Korea) Jong-Moo Park (Eulji University Uijeongbu Eulji Medical Center, Korea) Manabu Inoue (National Cerebral and Cardiovascular Center , Japan)	
17:30 - 17:50	<b>Coffee Break</b>	
17:50 - 18:40	<b>Sponsored Workshop Session 1 (Hanmi Pharm)</b> [Chair] Hee-Jung Song (Chungnam National University Sejong Hospital, Korea)	<b>Grand Ballroom (2F)</b>
17:50 - 18:15	<b>The RCT Journey: Insights and Practical Tips</b> Ki Hong Choi (Samsung Medical Center, Korea)	
18:15 - 18:40	<b>A “New Standard” in Dyslipidemia Treatment</b> Wookjin Yang (Asan Medical Center, Korea)	

09:00 - 10:40	<b>Scientific Session 1</b> [Chairs] Kyungbok Lee (Soon Chun Hyang University Hospital Seoul, Korea) Hae Woong Jeong (Inje University Busan Paik Hospital, Korea)	<b>Capri (2F)</b>
09:00 - 09:10	<b>Stroke during pregnancy and the postpartum period: A nationwide population-based study in South Korea</b> Darda Chung (Korea University Anam Hospital, Korea)	
09:10 - 09:20	<b>Vascular Risk-Factor Control in Recurrent Ischemic Stroke: Trends and Outcome Associations in the Korean Stroke Registry</b> Ji-Yeon Ha (Seoul National University Hospital, Korea)	
09:20 - 09:30	<b>Exploring the Relationship Between Air Pollution and Ischemic Stroke Rates: A Spatial and Temporal Study in Indonesia and Policy Recommendations</b> Jeddah Yanti (Gadjah Mada University / Universitas Negeri Makassar, Indonesia)	
09:30 - 09:40	<b>Concomitant Large Artery Steno-occlusion and Risk of Recurrent Ischemic Stroke in Patients with Nonvalvular Atrial Fibrillation</b> Hyung Seok Guk (Seoul National University Bundang Hospital, Korea)	
09:40 - 09:50	<b>Association Between the NOTCH3 Pathogenic Variant and Age-Related Macular Degeneration: Evidence from the Taiwan Biobank and Taiwan CADASIL Registry</b> Chih-Hao Chen (National Taiwan University Hospital, Taiwan)	
09:50 - 10:00	<b>Neutrophil extracellular traps in stroke thrombi retrieved by endovascular thrombectomy</b> Joonnyung Heo (Yonsei University College Of Medicine, Korea)	
10:00 - 10:10	<b>Non-traditional Lipid Parameters as Robust Predictors of Intracranial Atherosclerosis: A Meta-Analysis</b> Rahmatu Syifa (Faculty Of Medicine, Public Health, And Nursing, Gadjah Mada University, Indonesia)	
10:10 - 10:20	<b>Nocturnal Desaturation, Hemodynamic Variability and Outcome of Acute Ischemic Stroke</b> Hyunsun Oh (Asan Medical Center, Korea)	
10:20 - 10:30	<b>Perivascular spaces and basilar artery remodelling in Fabry disease: a dual vascular pathology</b> Sungho Ahn (Pusan National University Yangsan Hospital, Korea)	
10:30 - 11:00	<b>Coffee Break</b>	
11:00 - 12:00	<b>Plenary Session 1</b> [Chair] Sung-Hee Hwang (Kangnam Sacred Heart Hospital, Hallym University, Korea)	<b>Grand Ballroom + Capri (2F)</b>
11:00 - 12:00	<b>Update on Embolic Strokes of Undetermined Source: Implications for Clinical Practice and Research</b> George Ntaios (Internal Medicine First Propedeutic Department of Internal Medicine, AHEPA Hospital, Aristotle University of Thessaloniki, Greece)	
12:00 - 13:00	<b>Luncheon Symposium 2 (Chong Kun Dang Pharm)</b> [Chair] Kwang-Yeol Park (Chung-Ang University Hospital, Korea)	<b>Capri (2F)</b>
12:00 - 12:30	<b>Safety and Efficacy in Harmony : Focused on Apixaban</b> Doo Hyuk Kwon (Yeungnam University College of Medicine)	
12:30 - 13:00	<b>Optimal antiplatelet therapy after ischemic stroke</b> Hyuk-Seong Kwon (Hanyang University Guri Hospital, Korea)	



13:00 - 13:30	Satellite Symposium 2 (Organon) [Chair] Jaseong Koo (The Catholic University of Korea Seoul St. Mary's Hospital, Korea)	Capri (2F)
13:00 - 13:30	A Neurologist's Approach to Dyslipidemia: Why Ezetimibe Matters. Mi-Yeon Eun (Kyungpook National University Chilgok Hospital, Korea)	
13:50 - 15:30	Scientific Session 2 [Chairs] Tai Hwan Park (Seoul Medical Center, Korea) Keun-Hwa Jung (Seoul National University Hospital, Korea)	Capri (2F)
13:50 - 14:00	Global Trends, Collaboration Networks, and Emerging Hotspots of Artificial Intelligence in Stroke Research Nadyatul Husna (Dr. Reksodiwiry Military Hospital, Indonesia)	
14:00 - 14:10	Comparative Effects of Aerobic Exercise and Virtual Reality Cognitive Training (VRCT) for Cognitive Function After Stroke: Potential Roles in Neuroplasticity – A Systematic Review and Meta-Analysis Lilik Nurhasanah Purnomo Putri (Gadjah Mada University, Indonesia)	
14:10 - 14:20	Impact of Auditory Comprehension Status on Functional Outcome Recovery in Post-Stroke Aphasia Patients Kwanju Song (Asan Medical Center / Sangun-Myeon Health Sub-Center, Bonghwa-Gun Public Health Center, Korea)	
14:20 - 14:30	Clinician Performance in Detecting Cerebral Aneurysms on MRA Is Improved by Deep Learning Assistance Chan-Young Park (Chung-Ang University Hospital, Korea)	
14:30 - 14:40	Polar Metabolic Profiles in Ischemic Stroke Patients with Atrial Fibrillation Woo-Keun Seo (Samsung Medical Center, Sungkyunkwan University, Korea)	
14:40 - 14:50	Application for Real-Time Conversational Analysis of Multi-Modal Medical Data for Stroke Care Services Seongvin Ju (Saihst, Sungkyunkwan University School Of Medicine, Korea)	
14:50 - 15:00	AI-guided Analysis of a Senescence–Exosome Gene Panel in Plasma Extracellular Vesicles for Stroke Prevention Javad Alizargar (National Taipei University Of Nursing And Health Sciences, Taiwan)	
14:50 - 15:00	AI-guided Analysis of a Senescence–Exosome Gene Panel in Plasma Extracellular Vesicles for Stroke Prevention Javad Alizargar (National Taipei University Of Nursing And Health Sciences, Taiwan)	
15:00 - 15:10	Impact of Early Cognitive and Psychological Status on Return to Work After Acute Ischemic Stroke Yong Yi Tan (Nanyang Technological University, Singapore)	
15:10 - 15:20	Clinical Implementation of Pharmacogenomics Using Indream Medisupport: EMR-Integrated and Standalone Solutions Byeongzu Ghang (Jeju National University, Korea)	
15:30 - 15:50	MYUNG IN PHARM Coffee Break	

15:50 - 16:50	Sponsored Scientific Session : MYUNG IN PHARM [Chair] Woo-Keun Seo (Samsung Medical Center, Korea)	Capri(2F)
15:50 - 16:50	Acute Stroke Imaging in Clinical Practice and Research: Current Challenges and Multicenter Imaging Repository [KOR] Beom Joon Kim (A) (Seoul National University Bundang Hospital, Korea)	
16:50 - 17:50	Clinical Trial Session : [Chairs] Hyung-Min Kwon (SMG–SNU Boramae Medical Center, Korea) Jun Lee (Yeungnam University Medical Center, Korea)	Capri(2F)
16:50 - 17:05	Stroke Prevention With Apixaban and Clopidogrel in Atrial Fibrillation and Cerebral Atherosclerosis: The BEACON-AA Trial Young Dae Kim (Severance Hospital, Korea)	
17:05 - 17:20	Baseline Characteristics from the SOLO-ESUS Trial: Identifying High-Risk Atrial Cardiopathy in ESUS Bum Joon Kim (B) (Asan Medical Center, Korea)	
17:20 - 17:35	Dual antiplatelet Use for extended period targeted to AcuTe Ischemic stroke with presumed atherosclerotic Origin Jin Soo Lee (Ajou University Hospital, Korea)	
17:35 - 17:50	The STem cell-derived Extracellular Vesicle therapy In Acute ischemic stroke: STEVIA phase Ib trial Jin Soo Lee (Ajou University Hospital, Korea)	
17:50 - 18:40	Sponsored Workshop Session 2 (BORYUNG) [Chair] A-Hyun Cho (The Catholic University of Korea Yeouido St. Mary's Hospital, Korea)	Capri(2F)
17:50 - 18:15	The Emerging Role of Antidiabetic drugs in Stroke Nam Hoon Kim (Korea University Anam Hospital, Korea)	
18:15 - 18:40	Optimal Approach for HMOD Management with Fimasartan Combination Therapy Ki-Woong Nam (SMG-SNU Boramae Medical Center, Korea)	
08:00 - 08:50	Poster Session 1 [Chairs] Hahn Young Kim (Konkuk University Medical Center, Korea) Jinkwon Kim (Yongin Severance Hospital, Korea)	Sydney(2F)
13:00 - 13:50	Poster Session 2 [Chairs] Jeong-Min Kim (Seoul National University Hospital, Korea) Minwoo Lee (Hallym University Sacred Heart Hospital, Korea)	Sydney(2F)

Day 2: November 28(Fri)

08:10 - 09:00	Sponsored Workshop Session 3 (Mitsubishi Tanabe Pharma Korea) [Chair] Mi Sun Oh (Hallym University Sacred Heart Hospital, Korea)	Grand Ballroom(2F)
08:10 - 08:35	Early Neurological Deterioration in Stroke: from Predictive Signs to Proactive Solutions Darda Chung (Korea University Anam Hospital, Korea)	
08:35 - 09:00	Updated Clinical Evidence of Argatroban for END Soo Jeong (Hanyang University Seoul Hospital, Korea)	
09:00 - 10:40	Symposium 3 : BTC [Chairs] Jae-Kwan Cha (Dong-A University Hospital, Korea) Kyung-Ho Yu (Hallym University Sacred Heart Hospital, Korea)	Grand Ballroom(2F)
09:00 - 09:20	AI and Stroke Neurology Joonnyung Heo (Severance Hospital, Korea)	
09:20 - 09:40	AI and Neurology Ramin Zand (Pennsylvania State University, USA)	
09:40 - 10:00	Regional AI for ICH Management Jin Pyeong Jeon (Hallym University Chuncheon Sacred Heart Hospital, Korea)	
10:00 - 10:20	AI in Cognitive Neurology Sang Wan Lee (KAIST, Korea)	
10:20 - 10:40	Panel Discussion and Q&A [Panellist] Jeong Ho Hong (Keimyung University School of Medicine, Korea) Seong Ho Park (Hanyang University College of Medicine, Korea) MinWoo Lee (Hallym University Sacred Heart Hospital, Korea)	
10:40 - 11:00	Coffee Break	
11:00 - 12:00	Plenary Session 2 [Chair] Jong S. Kim (Gangneung Asan Hospital, Korea)	Grand Ballroom + Capri (2F)
11:00 - 12:00	Reperfusion Therapy Liping Liu (Capital Medical University, China)	
12:00 - 13:00	Luncheon Symposium 3 (Sanofi-Aventis Korea) [Chair] Byung-Chul Lee (Hallym University Sacred Heart Hospital, Korea)	Grand Ballroom(2F)
12:00 - 12:30	Optimizing Antiplatelet Strategies for Stroke Patients: Clopidogrel or Aspirin? Dongwhane Lee (Eulji University Uijeongbu Eulji Medical Center, Korea)	
12:30 - 13:00	Special populations that could benefit more from clopidogrel therapy for stroke secondary prevention Yo Han Jung (Gangnam Severance Hospital, Korea)	
13:00 - 13:30	Satellite Symposium 3 (Korea Otsuka Pharm.) [Chair] Jun Hong Lee (NHIC Ilsan Hospital, Korea)	Grand Ballroom(2F)
13:00 - 13:30	Re-thinking for Changing DAPT Practice in LAA Treatment Sang Hee Ha (Gachon University Gil Medical Center, Korea)	

13:50 - 15:30	ICAS Symposium 1 : Epidemiology and Stroke Mechanisms [Chairs] Keun-Sik Hong (Inje University Ilsan Paik Hospital, Korea) Byung-Woo Yoon (Eulji University Uijeongbu Eulji Medical Center, Korea)	Grand Ballroom(2F)
13:50 - 14:20	ICAS History (Video or Zoom) LR Caplan (Beth Israel Deaconess Medical Center, USA)	
14:20 - 14:50	ICAS Vs ECAS: Ethnic Differences and Stroke Mechanisms Jong S. Kim (Gangneung Asan Hospital, Korea)	
14:50 - 15:05	ICAS Epidemiology in Asians Liping Liu (Capital Medical University, China)	
15:05 - 15:20	ICAS Epidemiology in Non-Asians David Bonovich (Sutter Health Eden Medical Center, USA)	
15:20 - 15:30	Q&A	
15:30 - 15:50	Coffee Break	
15:50-17:30	ICAS Symposium 2 : Vessel Assessment [Chairs] Dong-Eog Kim (Dongguk University Ilsan Hospital, Korea) Xu Weihai (Chinese Academy of Medical Science, China)	Grand Ballroom(2F)
15:50 - 16:10	Understanding Vascular Tortuosity and Hemodynamics Bum Joon Kim (B) (Asan Medical Center, Korea)	
16:10 - 16:30	AI-Powered Techniques for Measuring Arterial Morphology Woo-Keun Seo (Samsung Medical Center, Korea)	
16:30 - 16:50	Vessel Wall MRI in The Evaluation Of Intracranial Diseases Jong S. Kim (Gangneung Asan Hospital, Korea)	
16:50 - 17:10	Management of ICAS Based on Vessel Wall MR Findings Xu Weihai (Chinese Academy of Medical Science, China)	
17:10 - 17:20	Q&A	
08:10 - 09:00	Sponsored Workshop Session 4 (Pfizer) [Chair] Tae-Jin Song (Ewha Womans University Seoul Hospital, Korea)	Capri(2F)
08:10 - 08:40	Stroke Prevention in Atrial fibrillation : Percutaneous Left Atrial Appendage Occlusion Update Seung Yong Shin (Korea University Ansan Hospital, Korea)	
08:40 - 09:00	Optimal anticoagulation for secondary stroke prevention of Afib Joonsang Yoo (Yongin Severance Hospital, Korea)	
09:00 - 10:40	Scientific Session 3 [Chairs] Beom Joon Kim (A) (Seoul National University Bundang Hospital, Korea) Sang-il Suh (Korea University Guro Hospital, Korea)	Capri(2F)
09:00 - 09:10	Functional, Vascular, and Safety Outcomes of Intravenous Tenecteplase for Acute Ischemic Stroke Between 4.5 and 24 Hours of Symptom Onset: A Systematic Review and Meta-Analysis of Randomized Clinical Trials Nabilah Puteri Larassaphira (Faculty Of Medicine, Hasanuddin University, Indonesia)	

09:10 - 09:20	Trans-Ancestry Assessment of European Statin Response Polygenic Risk Score in Young Korean Stroke Patients Eung-Joon Lee (Seoul National University Hospital, Korea)	
09:20 - 09:30	Intracranial Artery Tortuosity and the Effectiveness of Induced Hypertension in Acute Small Vessel Occlusion Stroke with Early Neurologic Deterioration Hyunsun Oh (Asan Medical Center, Korea)	
09:30 - 09:40	Comparative Risk of Dementia between Direct Oral Anticoagulants and Warfarin After Atrial Fibrillation Related Ischemic Stroke Sangwon Choi (Hallym University Sacred Heart Hospital, Korea)	
09:40 - 09:50	Venous outflow and outcomes after endovascular thrombectomy: Interaction with blood pressure variability. Hyungjong Park (Keimyung University School Of Medicine, Korea)	
09:50 - 10:00	Association Between Hyperacute Blood Pressure Lowering and Outcomes in Patients With Endovascular Thrombectomy Jae Wook Jung (Yonsei University College Of Medicine, Korea)	
10:00 - 10:10	Early Diagnostic of MicroRNAs in Subclinical Atherosclerosis with Type 2 Diabetes Mellitus Patients in North India Monirujjaman Biswas (National Institute Of Tb And Respiratory Diseases, India)	
10:10 - 10:20	Inhibiting monocyte migration reduces arterial thrombosis and facilitates thrombolysis Dong-Eog Kim (Dongguk University Ilsan Hospital / Dongguk University, Korea)	
10:20 - 10:30	Oxidative stress-induced astrocytic collagen biosynthesis drives neuronal death in ischemic stroke Jae-Hun Lee (Institute For Basic Science, Korea)	
10:30 - 10:40	Serum Albumin as a Risk Factor for Contrast-Associated Acute Kidney Injury Following Mechanical Thrombectomy: Impact on Short-Term Outcomes Ga Yeon Kim (Dong-A University Hospital, Korea)	
10:40 - 11:00	Coffee Break	
11:00 - 12:00	Plenary Session 2 [Chair] Jong S. Kim (Gangneung Asan Hospital, Korea)	Grand Ballroom + Capri(2F)
11:00 - 12:00	Reperfusion Therapy Liping Liu (Capital Medical University, China)	
12:00 - 13:00	Luncheon Symposium 4 (Amgen Korea) [Chair] Ji Hoe Heo (Bundang CHA Hospital, Korea)	Capri(2F)
12:00 - 12:30	Start Early PCSK9 inhibitor in Acute Phase of Atherosclerotic Stroke Patients JungHwa Seo (Dong-A University Hospital, Korea)	
12:30 - 13:00	Stay Low Level of LDL-C to Reduce CV Risk of Atherosclerotic Stroke Patients Minwoo Lee (Hallym University Sacred Heart Hospital, Korea)	
13:00 - 13:30	Satellite Symposium 4 (SAMJIN PHARM.) [Chair] Soo Joo Lee (Eulji University Daejeon Eulji Medical Center, Korea)	Capri(2F)

13:00 - 13:30	Optimal DAPT treatment strategies for preventing Stroke Hye Seon Jeong (Chungnam National University Hospital, Korea)	
13:30 - 13:50	Coffee Break	
13:50 - 15:30	Scientific Session 4 [Chairs] Sung Hyuk Heo (Kyung Hee University Medical Center, Korea) Manabu Inoue (National Cerebral and Cardiovascular Center , Japan)	Capri(2F)
13:50 - 14:00	Modifiable Lifestyle and Metabolic Risks for Ischemic Stroke in Indonesia: Comparative Contributions of Fruit, Vegetables, and LDL Cholesterol Najwa Aisya Putri (International Open University, Indonesia)	
14:00 - 14:10	Impact of Low-Density Lipoprotein Cholesterol Levels on Atherosclerotic Vascular Changes: Analysis of Korean Treat Stroke to Target (TST) Trial Sanghee Ha (Gil Medical Center, Korea)	
14:10 - 14:20	Impact of failed back surgery syndrome on stroke and all-cause mortality: A nationwide cohort study Dougho Park (Pohang Stroke And Spine Hospital, Korea)	
14:20 - 14:30	Association between FIB-4 and Post-stroke Cognitive Impairment outcomes Sangwon Choi (Hallym Sacred Heart Hospital / Hallym College Of Medicine, Korea)	
14:30 - 14:40	Clinical Implications of an Imaging-Based Classification for Detecting New Atrial Fibrillation after Ischemic Stroke : A 10-Year Study of Two Comprehensive Stroke Centers Hokyu Kim (Korea University Guro Hospital, Korea)	
14:40 - 14:50	Silent Sentinel Infarcts on Noncontrast CT: A High-Risk Clinical Syndrome Predicting Stroke Etiology and Outcome with a Deep Learning-Based Solution for Detection Seunghan Yeom (Seoul National University Hospital / Jlk Inc., Korea)	
14:50 - 15:00	Machine Learning Analysis of Nocturnal Food Availability and Night-Time Light Exposure as Circadian-Metabolic Determinants of Stroke Burden in Nationwide Spatial Epidemiology Sahnaz Vivinda Putri (Indonesia Open University, Indonesia)	
15:00 - 15:10	Gut microbiome targeted therapy for hemorrhagic stroke caused by cerebral cavernous malformation Jaesung Peter Choi (University Of New South Wales, Australia)	
15:10 - 15:20	The Hidden Role of Environmental Exposures in Shaping Ischemic Stroke Burden Across Southeast Asia: A Population-Based Study Zavia Putri Salsabila (Universitas Islam Indonesia, Indonesia)	
15:20 - 15:30	Machine Learning and Causal Inference Analysis of Elevator Outages as Natural Experiments: Forced Stair Use and Short-Term Stroke Emergency Risk in Metropolitan High-Rise Residential Districts Elfiany Syafruddin (Science, Society, Technology Commons, Indonesia)	
15:30 - 15:50	Coffee Break	
15:50 - 16:40	Debate Session 1 : Optimal LDL-C Targets in Ischemic Stroke Prevention: Should We Aim for <70 mg/dL or Push Lower? [Chairs] Hyo Suk Nam (Yonsei University College of Medicine, Korea) Yong-Seok Lee (SMG-SNU Boramae Medical Center, Korea)	Capri(2F)

15:50 - 16:10	Targeting LDL-C <70 Mg/Dl is Enough and Safe Tae-Jin Song (Ewha Womans University Seoul Hospital, Korea)	
16:10 - 16:30	“The Lower, the Better”: Ultra-Low Targets with PCSK9 Inhibitors Are Superior Hee Kwon Park (Inha University Hospital, Korea)	
16:30 - 16:40	Panel Discussion and Q&A [Panellist] Wookjin Yang (Asan Medical Center, Korea) Ho Geol Woo (Kyung Hee University Hospital, Korea)	
16:40 - 17:30	Debate Session 2 : Adult Moyamoya Disease Treatment: Surgery vs. Medi- cal Management [Chairs] Hyo Suk Nam (Yonsei University College of Medicine, Korea) Yong-Seok Lee (SMG-SNU Boramae Medical Center, Korea)	Capri(2F)
16:40 - 17:00	Direct Bypass as The Gold Standard: Why Surgery Outperforms Medical Therapy Tae Keun Jee (Samsung Medical Center, Korea)	
17:00 - 17:20	Medical Therapy First: Balancing Risks and Realities in Adult Moyamoya Care Mi-Yeon Eun (Kyungpook National University Chilgok Hospital, Korea)	
17:20 - 17:30	Panel Discussion and Q&A [Panellist] Hyung-Jong Park (Keimyung University Dongsan Hospital, Korea) Jong Wook Shin (Chungnam National University Sejong Hospital, Korea)	
13:50 - 15:30	Remodeling of Acute Stroke Care System [Chairs] Kyungbok Lee (Soon Chun Hyang University Hospital Seoul, Korea) Jae-Kwan Cha (Dong-A University Hospital, Korea)	Sicily(1F)
13:50 - 14:10	Stroke Center Certification in Korea Jinkwon Kim (Yongin Severance Hospital, Korea)	
14:10 - 14:30	Present and Future of Regional cardio-cerebrovascular Center in Korea Keun-Hwa Jung (Seoul National University Hospital, Korea)	
14:30 - 14:50	Application of Person-/Region based Network System Dae-Hyun Kim (Dong-A University Hospital, Korea)	
14:50 - 15:30	Panel Discussion [Panellist] Ji Hyun Choi (HANKYOREH, Korea) Hyun Wook Ryu (Kyungpook National University Hospital, Korea) Byeong Wook Yoo (National Fire Agency, Korea) Yang Kyun Kim (ZDNET Korea, Korea)	
13:00 - 13:50	Poster Session 3 [Chairs] Jang-Hyun Baek (Kangbuk Samsung Hospital, Korea) Kang Ho Choi (Chonnam National University Hospital, Korea)	Sydney(2F)
17:40 - 19:00	Poster Session 4 [Chairs] Kyusik Kang (Nowon Eulji Medical Center, Korea) Sang-jun Ahn (Catholic Kwandong University Medical Center, Korea) Mi-Yeon Eun (Kyungpook National University Chilgok Hospital, Korea) Young Dae Kim (Severance Hospital, Korea)	Sydney(2F)

Day 3: November 29(Sat)

08:00 - 09:40	Symposium 4 : NeuroRehabilitation [Chairs] Yong-Il Shin (Pusan National University Yangsan Hospital, Korea) Seung Don Yoo (Kangdong Kyung Hee University Hospital, Korea)	Capri(2F)
08:00 - 08:25	Smart Monitoring System for Stroke Rehabilitation Na Young Kim (Yonsei University College of Medicine, Korea)	
08:25 - 08:50	BCI-Based Rehabilitation in Stroke Patients Joon-Ho Shin (National Rehabilitation Center, Korea)	
08:50 - 09:15	Gait Rehabilitation with The Exoskeletal Wearable Robots in Stroke Patients Fazah Akhtar Hanapiah (Faculty of Medicine, Universiti Teknologi MARA, Selangor, Malaysia)	
09:15 - 09:40	Machine Learning in Stroke Rehabilitation Soyoung Kwak (College of Medicine, Yeungnam University, Korea)	
09:40 - 10:40	Plenary Session 3 [Chair] Gyeong-Moon Kim (Samsung Medical Center, Korea)	Capri(2F)
09:40 - 10:40	Advancements in IV thrombolysis: Transitioning from tPA to TNK Carlos A. Molina (Vall Herbon Hospital, Spain)	
10:40 - 11:00	Coffee Break	
11:00 - 12:40	Symposium 5 : Anti-amyloid Therapy and Stroke (Joint Session of KSS and VasCog-Korea) [Chairs] Sung Il Sohn (Keimyung University Dongsan Hospital, Korea) Seong-Ho Koh (Hanyang University Hospital, Korea)	Capri(2F)
11:00 - 11:25	Antiamyloid Immunotherapy for Alzheimer’s disease Sung Hoon Kang (Korea University Guro Hospital, Korea)	
11:25 - 11:50	CAA-Ri and ARIA: Diagnosis and Treatment Young Hee Jung (Hallym University Sacred Heart Hospital, Korea)	
11:50 - 12:15	The Impact of Anti-Amyloid Immunotherapies on Stroke Care Tomotaka Tanaka (National Cerebral and Cardiovascular Center Suita, Japan)	
12:15 - 12:40	Panel Discussion [Panel] Jae-Sung Lim (Asan Medical Center, Korea) Hyuk-Seong Kwon (Hanyang University Guri Hospital, Korea)	
12:40 - 13:40	Luncheon Symposium 5: Managing Anticoagulation in Stroke Patients : Tailored Strategies with Edoxaban (Daiichi-Sankyo, DAEWOONG) [Chair] Oh Young Bang (Samsung Medical Center, Korea)	Capri(2F)
12:40 - 13:05	Real-World Anticoagulation for Secondary Stroke Prevention Ye rim Kim (Kangdong Sacred Heart Hospital, Korea)	
13:05 - 13:30	Tailored Anticoagulation with Edoxaban in Complex Stroke Patients Jaeseob Yun (Keimyung University Dongsan Hospital, Korea)	
13:30 - 13:40	Q&A	
13:40 - 14:00	Coffee Break	



08:00 - 09:40	<b>ICAS Symposium 3 : Treatment</b> [Chairs] Kyung-Yul Lee (Gangnam Severance Hospital, Korea) Joung-Ho Rha (Inha University Hospital, Korea)	<b>Sicily(1F)</b>
08:00 - 08:20	<b>Anti-Thrombotics</b> Kazunori Toyoda (National Cerebral and Cardiovascular Center, Japan)	
08:20 - 08:40	<b>LDLc Target in The Management of ICAS</b> Jong S. Kim (Gangneung Asan Hospital, Korea)	
08:40 - 09:00	<b>Acute Thrombectomy: Differences between ICAS and Other Conditions</b> Jin Soo Lee (Ajou University Hospital, Korea)	
09:00 - 09:20	<b>Stenting/Angioplasty of ICAS: Past and Future</b> Liping Liu (Capital Medical University, China)	
09:20 - 09:40	<b>Q&amp;A</b>	
10:40 - 11:00	<b>Coffee Break</b>	
11:00 - 12:40	<b>ICAS Symposium 4 : Other Intracranial Vascular Diseases</b> [Chairs] Man Seok Park (Chonnam National University Hospital, Korea) Chul-Ho Sohn (Seoul National University Hospital, Korea)	<b>Sicily(1F)</b>
11:00 - 11:20	<b>RNF 213 Vasculopathy</b> Masafumi Ihara (National Cerebral and Cardiovascular Center, Japan)	
11:20 - 11:40	<b>Non-Surgical Management of MMD</b> Oh Young Bang (Samsung Medical Center, Korea)	
11:40 - 12:00	<b>Intracranial Dissection</b> Byung Moon Kim (Severance Hospital, Korea)	
12:00 - 12:20	<b>Infectious Intracranial Artery Disease</b> Nijasri Suwanwela (Chulalongkorn University, Thailand)	
12:20 - 12:40	<b>Q&amp;A</b>	
12:40 - 13:40	<b>Luncheon Symposium 6 (SK chemicals)</b> [Chair] Hee-Joon Bae (Seoul National University Bundang Hospital, Korea)	<b>Sicily(1F)</b>
12:40 - 13:10	<b>Next neuroprotective agent : Ginkgo biloba ext.</b> Chi Kyung Kim (Korea University Guro Hospital, Korea)	
13:10 - 13:40	<b>Treatment of Anti-Platelet in Stroke patients &amp; Solution of poly-pharmacy</b> Sungho Ahn (Pusan National University Yangsan Hospital, Korea)	
13:40 - 14:00	<b>Coffee Break</b>	
14:00 - 15:55	<b>한국뇌졸중유전체연구회 심포지엄</b> [Chair] Jay Chol Choi (Jeju National University Hospital, Korea)	<b>Sicily(1F)</b>
14:00 - 14:30	<b>ACMG guideline의 update 및 최신경향</b> Boram Kim (Korea University Guro Hospital, Korea)	
14:30 - 15:00	<b>Multimomics 분석기술의 소개 및 이해</b> Soo Ji Lee (Seoul National University Graduate School of Public Health, Korea)	

15:00 - 15:30	<b>유전체 바이오 빅데이터 연구의 현황과 활용</b> Ji Hwan Park (Ajou University, Korea)	
15:30 - 15:45	<b>Discussion &amp; Q&amp;A</b>	
15:45 - 15:55	<b>한국유전체연구회 총회</b>	
15:55 - 16:15	<b>Coffee Break</b>	
16:05 - 18:00	<b>Genesis-K</b> [Chair] Hee-Joon Bae (Seoul National University Bundang Hospital, Korea)	<b>Sicily(1F)</b>
16:15 - 16:30	<b>Update of study progress of GENESIS-K</b> Jonguk Kim (Seoul National University Bundang Hospital, Korea)	
16:30 - 16:45	<b>Early-onset stroke GWAS</b> Jee Eun Kim (Seoul National University Graduate School of Public Health, Korea)	
16:45 - 17:00	<b>Functional recovery GWAS</b> Jeong Yoon Lee (Soon Chun Hyang University Hospital, Korea)	
17:00 - 17:15	<b>Stroke recurrence GWAS</b> Do Yeon Kim (Seoul National University Bundang Hospital, Korea)	
17:15 - 17:30	<b>PGS study for statin effect</b> Eung-Joon Lee (Seoul National University Hospital, Korea)	
17:30 - 17:45	<b>Variant reclassification in targeted gene panel</b> Keon-Joo Lee (Korea University Guro Hospital, Korea)	
17:45 - 18:00	<b>Discussion and Q&amp;A</b>	
11:00 - 12:40	<b>Nursing Symposium</b> [Chairs] Sam Yeol Ha (Chung-Ang University Hospital, Korea) Jinkwon Kim (Yongin Severance Hospital, Korea)	<b>Sydney(2F)</b>
11:00 - 11:20	<b>Basic Assessment of Stroke (Neurological Examination)</b> Jeonghoon Bae (Chung-Ang University Gwangmyeong Hospital, Korea)	
11:20 - 11:40	<b>Etiologic Classification of Stroke (Why Do We Perform These Studies?)</b> Do Yeon Kim (Seoul National University Bundang Hospital, Korea)	
11:40 - 12:00	<b>Secondary Prevention for Stroke (How to Guide The Patients for Better Outcome)</b> Seong Ho Park (Hanyang University College of Medicine, Korea)	
12:00 - 12:20	<b>Procedures for Stroke Patients (TFCA, Stent, Thrombectomy, CEA, Craniotomy) (How to Explain These Procedures to The Patients)</b> Jeong Yoon Lee (Soon Chun Hyang University Hospital Seoul, Korea)	
12:20 - 12:40	<b>Risk Factors &amp; Management of END (How to Look Closely and How to Manage These Patients)</b> MinWoo Lee (Hallym University Sacred Heart Hospital, Korea)	

Poster Session

November 27 (Thu)

08:00 - 08:50	Poster Session 1 CHAIRS   Hahn Young Kim (Konkuk University Medical Center, Korea) Jinkwon Kim (Yongin Severance Hospital, Korea)
13:00 - 13:50	Poster Session 2 CHAIRS   Jeong-Min Kim (Seoul National University Hospital, Korea) Minwoo Lee (Hallym University Sacred Heart Hospital, Korea)

Poster Session 1

Zone 1	CHAIR: Hahn Young Kim (Konkuk University Medical Center, Korea)	Poster Room
PA-101	Device Selection and Outcomes in Mechanical Thrombectomy for Large Vessel Occlusion: A Sub-analysis of the K-NET Registry Yuichiro Kushiro (St. Mariannna University School Of Medicine, Japan)	
PA-102	Predicting Functional Outcome After Mechanical Thrombectomy in Acute Ischemic Stroke: A Structural Equation Model of Age Mediated by Brain Frailty on Pre-Thrombectomy MRI Yoonkyung Lee (Dong-A University Hospital, Korea)	
PA-103	Comparative Clinical Outcomes After Endovascular Thrombectomy in Acute Stroke Patients With and Without Cancer: A Korea–Taiwan Registry Analysis Cheng-Yang Hsieh (Tainan Sin Lau Hospital, Taiwan)	
PA-104	THROMBECTOMY IN ACUTE ISCHEMIC STROKE DUE TO BASILAR ARTERY OCCLUSION BEYOND 24 HOURS Huong Nguyen (People’s Hospital 115, Vietnam)	
PA-105	Impact Of Age On Clinical Outcomes After Endovascular Thrombectomy In Patients With Large Ischemic Stroke Thi Minh Hang Tran (Pham Ngoc Thach University Of Medicine, People Hospital 115, Vietnam)	
PA-106	Impact of pre-stroke Angiotensin-Converting Enzyme inhibitors (ACEi) on pneumonia during acute stroke: An Asian perspective Chee Peng Hor (Clinical Researcher, Malaysia)	
PA-107	Evaluation of Nutritional Management During the Vasospasm Period in Clazosentan Treatment After Subarachnoid Hemorrhage Nanae Seino (St. Mariannna University School Of Medicine, Japan)	
PA-108	Diagnostic and Prognostic Utility of Inflammatory Hematologic Ratios in Acute Ischemic Stroke: A Receiver Operating Characteristic Curve Analysis Lisa Tenriesa Muslich (Hasanuddin University, Dr. Wahidin Sudirohusodo General Hospital, and Hasanuddin University Teaching Hospital, Indonesia)	

PA-109	Collateral Perfusion Score as a Surrogate of Infarct Growth Rate and Predictor of Futile Endovascular Thrombectomy in Acute Anterior Circulation Ischemic Stroke Hyun Jeong Kim (Deepclue Inc., Daejeon St. Marys Hospital, College Of Medicine, The Catholic University Of Korea, Korea)
PA-110	Declining Utilization of Intravenous Thrombolysis for Acute Ischemic Stroke in Korea: Nationwide Trends and Contributing Factors Yong Soo Kim (Seoul National University College Of Medicine, Cerebrovascular Disease Center, Seoul National University Bundang Hospital, Korea)
PA-111	Extended Time Window (>6 Hour) Mechanical Thrombectomy; Good Clinical Outcome in the Younger Age Population in Thrombectomy Cases: Relationship between Age and Prognosis Jinmo Cho (Serim General Hospital, Korea)
PA-112	Case Report: Artery of Percheron Infarction Diagnosis By Mri 3 Tesla And Low-Dose Intravenous Thrombolysis Treatment Truong Minh Ngo (Can Tho Stroke International Services General Hospital, Vietnam)
PA-113	Recurrent Ischemic Stroke in a CYP2C19 Poor Intermediate Metabolizer A case for Genotype Guided Antiplatelet Therapy Truong Minh Ngo (Can Tho Stroke International Services General Hospital, Vietnam)
PA-114	Prognostic Factors and Timing of Endovascular Therapy in Patients With Active Cancer and Large Vessel Occlusion Hyung Jun Kim (Samsung Medical Center, School Of Medicine, Sungkyunkwan University, Korea)
PA-115	The Impact of Family Support on the Recovery of Stroke Patients Inda Lestari (Jambi University, Indonesia)
PA-116	A Statistical Perspective on The Relationship Between High Blood Pressure, High Cholesterol, and Vegetable Consumption and Stroke Rara Yulianda (Sulthan Thaha Saifuddin State Islamic University, Indonesia)

Zone 2	CHAIR: Jinkwon Kim (Yongin Severance Hospital, Korea)	Poster Room
PB-101	The Impact of Cerebral Microbleeds on Hemorrhagic Transformation and Functional Outcome following Reperfusion Therapy. Ha Nguyen Thi Thu (Binh Thanh General Hospital, Vietnam)	
PB-102	Clinical Impact of Post-Recanalization Hemorrhagic Transformation and Its Prediction Using Base-line Non-Contrast CT: Results From a Nationwide Prospective Multicenter Imaging Repository Wi-Sun Ryu (Jlk Inc., Korea)	
PB-103	RAPID CTA versus JLK LVO for Large Vessel Occlusion Detection: A Pragmatic Comparison of Performance and Common Pitfalls Wi-Sun Ryu (Jlk Inc., Korea)	
PB-104	Anatomical variations of the torcular Herophili connecting cerebral venous sinuses on magnetic resonance venography Jei Kim (Chungnam National University, Korea)	
PB-105	Clinical Usefulness of Silent MRA in Follow-up after Coil Embolization for Cavernous Sinus Fistulas Toshiya Osanai (Hokkaido University Hospital, Japan)	

Poster Session 2

PB-106	Artificial Intelligence and Detection of Anterior Circulation Large Vessel Occlusion on Noncontrast CT: A Multinational Validation and Pivotal Reader Study Demonstrating Improved Clinician Accuracy Wi-Sun Ryu (Jlk Inc., Korea)
PB-107	Quantitative Assessment of Intracranial Aneurysms: Comparison of Deep Learning Image Reconstruction and Hybrid Iterative Reconstruction Otgonbaatar Chuluunbaatar (Mongolian National University Of Medical Sciences, Mongolia)
PB-108	Association Between Cerebral Oxyhemoglobin Coherence and Perfusion Defects in Acute Ischemic Stroke: A Preliminary Study Tae Jung Kim (Seoul National University Hospital, Korea)
PB-109	Development of a Generative Model for Predicting Future Cerebrovascular Changes Using MRA (NOSTRADAMUS study) Kyungseo Kim (Samsung Advanced Institute For Health Sciences And Technology (saihst), Sungkyunkwan University, Korea)
PB-110	The value of arterial spin-labeling MRI in the assessment of collaterals of patients with carotid occlusive disease Hyunkoo Kang (Seoul Veterans Hospital, Korea)
PB-111	Comparison of a new craniometric guidance for the Sylvian vein versus Taylor-Haughton line Hyojoon Kim (Presbyterian Medical Center, Korea)
PB-112	Assessing the risk of overt or covert brain infarct by lesion mapping Jinyong Chung (Dongguk University, National Priority Research Center For Stroke, Korea)
PB-113	Stroke Mimics: Artifact-Induced Pseudolesions in Stroke Imaging Hye Na Jung (Korea University Guro Hospital, Korea)
PB-114	Analysis of Ischemic Stroke Research Articles: A Synthesis of Therapeutic and Pathological Findings Willy Febri (Muhammadiyah Palangka Raya University, Indonesia)
PB-115	Investigating Novel Therapeutic and Diagnostic Strategies for Ischemic Stroke Willy Febri (Muhammadiyah Palangka Raya University, Indonesia)
PB-116	Translating Preclinical Findings to Clinical Practice: The Challenge of Ischemic Stroke Therapies Willy Febri (Muhammadiyah Palangka Raya University, Indonesia)
PB-117	Transcriptomic Profiling of Immune Metabolic Dysregulation and Neuro Cardiac Pathway Signatures in Cardioembolic Stroke Nadyatul Husna (Dr. Reksodiwiry Military Hospital, Indonesia)
PB-118	Circulating Biomarkers for Predicting Inflammatory and Immune-Mediated Outcomes in Acute Ischemic Stroke Patients Silmi Rahmani (The Pranala Institute, Indonesia)
PB-119	The Effects of Hypertension, Body Mass Index, and Smoking on Stroke: A Statistical Binary Regression Approach Rani Marsyanda (Sulthan Thaha Saifuddin State Islamic University, Indonesia)

Zone 1		CHAIR: Jeong-Min Kim (Seoul National University Hospital, Korea)	Poster Room
PA-201	α7nAChR activation protects against neuroinflammation in cerebral ischaemic reperfusion injury via miR-21/TNF-α/NFκB signalling pathway. Mohd Kaisan Mahadi (Universiti Kebangsaan Malaysia, Malaysia)		
PA-202	Mast Cell–Targeted Inhibitors Disrupting the Dura-Brain Neuroimmune Axis: Pharmacoinformatic Insights into MRGPRX2 Modulation for Post-Stroke Inflammation Control Rizki Rachmad Saputra (Universitas Palangka Raya, Indonesia)		
PA-203	Dual Downregulation of NQO2 and NLRP3: A Pharmacoinformatic Strategy Targeting Oxidative–Inflammatory Cascades in Stroke and Intracranial Atherosclerosis Rizki Rachmad Saputra (Universitas Palangka Raya, Indonesia)		
PA-204	Comparative Analysis of Hippocampal Neuron Survival Across Subfields in MCAO Rats Treated with NevG. Muhammad Danial Ramli (Management And Science University, Malaysia)		
PA-205	Relationship between Agricultural Vulnerability to Organic Fungicides and Herbicides and Stroke Incidence in a Rural Population of Northern India. Rahul Kumar (J K College, India)		
PA-206	Association of Neurofilament Light Chain, Glycated Hemoglobin, Homocysteine, Folic Acid, and Vitamin B12 in Serum of Stroke Patients with Type 2 Diabetes Ankush Kumar (Shakuntla Hospital And Research Centre, India)		
PA-207	Optimization of a zebrafish embryo model to investigate cerebral hypoxia-reoxygenation sulfite-mediated chemical hypoxia Azim Haikal Md Roslan (National University Of Malaysia, Malaysia)		
PA-208	Cytoprotective alternation interventions in acute ischemic stroke: mapping three decades global research dynamics 1995-2025 Astrid Ekklesia Saputri (Faculty Of Medicine, Universitas Palangka Raya, Indonesia)		
PA-209	Epigenetic Regulation of Neuroinflammation in Experimental Stroke: Insights from Primary Cell Culture and Rat Middle Cerebral Artery Occlusion Model Dharmendra Khatri (Nims University, India)		
PA-210	NEUROPROTECTIVE POTENTIAL OF GENISTEIN AND 17B-ESTRADIOL IN AMYLOID BETA-INDUCEDNEUROTOXICITY: IMPLICATIONS FOR STROKE Pardeep Kumar (Shakuntla Hospital And Research Center, India)		
PA-211	Magnetic stimulation for the targeted delivery of atorvastatin-loaded liposomes in stroke treatment Kang-Ho Choi (Chonnam National University Medical School And Hospital, Korea)		
PA-212	Multimodal Anti-Atherosclerotic Effect of Clinical-Grade Mesenchymal Stem Cell-Derived Extracellular Vesicles Oh Young Bang (Samsung Medical Center, Korea)		
PA-213	Association of protein C activity with cardioembolic stroke: Mediation by atrial fibrillation Soo-Hyun Park (Soon Chun Hyang University Hospital Seoul, Korea)		

PA-214	<b>Synergistic Regeneration: Polydeoxyribonucleotide and Shock Wave Sequencing in Immobilized Skeletal Muscle Recovery</b> Dong Rak Kwon (Catholic University Of Daegu School Of Medicine, Daegu, Korea)
PA-215	<b>Dynamic Reorganization of Neural Circuits Underlying Early Recovery After Stroke</b> Dokyeong Kim (Postech, Korea)
PA-216	<b>Identifying and Ranking Stroke Risk Factors Through Python-Based Machine Learning Techniques for Enhanced Prevention Strategies</b> Ferza Alfath (Alumnus Of Universitas Andalas, Indonesia)
PA-217	<b>Epidemiology and Risk Prediction of Stroke: A Python-Based Analysis of Population-Level Determinants and Prognostic Modeling</b> Muhammad Irzaq (Alumnus Padang State University, Indonesia)

<b>Zone 2</b>	CHAIR: Minwoo Lee (Hallym University Sacred Heart Hospital, Korea)	Poster Room
PB-201	<b>Navigating Challenges: Transcarotid Artery Revascularization in a Patient with Heparin-Induced Thrombocytopenia – A Unique Case</b> Jinpyo Hong (Penn State Health Milton S. Hershey Medical Center, United States)	
PB-202	<b>Reducing Reading Time Using AI-Based Intracranial Hemorrhage Detection Software</b> Wi-Sun Ryu (Jlk Inc., Korea)	
PB-203	<b>AI-Integrated Biosensor Wearables for Real-Time Monitoring and Personalized Education in Aged Patients with Stroke and Dementia</b> Vikas Sharma (Idc Research Center, India)	
PB-204	<b>A Descriptive Review of the Challenges and Opportunities in the Adoption of AI and Machine Learning for Stroke Care</b> Mega Dwi Septivani (Padang State Polytechnic, Indonesia)	
PB-205	<b>Diagnostic and Prognostic Accuracy of Artificial Intelligence Systems in Stroke Care</b> Ni Made Ratih Kusuma Dewi (The Pranala Institute, Indonesia)	
PB-206	<b>Advancing Neuroimaging Analysis through Deep Learning: A Study on Open-Source MRI Datasets</b> Rao Faizan (National University Of Science And Technology, Pakistan)	
PB-207	<b>Early Prediction of Post-Stroke Cognitive Decline Using a Multimodal Deep Learning Framework</b> Sanghee Kim (Keimyung University, Korea)	
PB-208	<b>Artificial Intelligence-Based Real-Time Detection of Stroke Events Using Wearable Biosignals and Spontaneous Speech</b> Sanghee Kim (Keimyung University, Korea)	
PB-209	<b>Video-Based Detection of Post-Stroke Motor Impairment Using Deep Pose Estimation and Movement Analysis</b> Sanghee Kim (Keimyung University, Korea)	
PB-210	<b>Automated Detection of Middle Cerebral Artery Stenosis on MRA using a 3D Deep Learning Model</b> Wheesung Lee (Near Brain Inc., Korea)	

PB-211	<b>Feasibility Study of AI-enabled Soft-Tissue-Enhanced CT Image to Detect Acute Ischemic Stroke</b> Taehwan Kim (Polestar Healthcare, Korea)
PB-212	<b>“A Rare Case of Large-Vessel Giant Cell Arteritis Involving the Internal Carotid and Vertebral Arteries with Subsequent Stroke</b> Da Eun Jeong (Veterans Health Service Medical Center, Korea)
PB-213	<b>A Case of Distal ICA Severe Stenosis in Overlap Between RNF213 Vasculopathy and APS Vasculopathy</b> Jeonghoon Bae (Chung-Ang University Gwangmyeong Hospital, Korea)
PB-214	<b>LOW-DOSE INTRAVENOUS THROMBOLYSIS IN THE EXTENDED TIME WINDOW BEYOND 4.5 HOURS IN PATIENTS WITH ACUTE ISCHEMIC STROKE A CASE SERIES FROM CAN THO S.I.S GENERAL HOSPITAL</b> Truong Minh Ngo (Can Tho Stroke International Services General Hospital, Vietnam)
PB-215	<b>Anterior Communicating Artery Location as a Risk Factor for Rupture in Small Intracranial Aneurysms Less Than 5 mm: A Retrospective Analysis</b> Hyun Ho Choi (Chung-Ang University, Korea)
PB-216	<b>Association of Clopidogrel Genetic Polymorphism with Efficacy and Safety for Ischemic Stroke or Transient Ischemic Attack: A Systematic Review and Updated Meta-Analysis</b> Geun Yeong Kim (Keimyung University School Of Medicine, Korea)
PB-217	<b>Temporal Dynamics of Atrial Fibrillation Detection Across Clinical Subtypes in Relation to Cardiovascular Events</b> Yo Han Jung (Gangnam Severance Hospital, Yonsei University College Of Medicine, Korea)
PB-218	<b>Effects of Smoking Status on the Age of Onset of First-ever Ischemic Stroke by Subtypes: Korean Stroke Registry</b> Han-Yeong Jeong (Smg-Snu Boramae Medical Center, Seoul National University College Of Medicine, Korea)
PB-219	<b>Machine Learning-Based Analysis of Endovascular Treatment Patterns in Intracranial Aneurysms: An Interventional Neuroradiology Perspective</b> Devi Yulia Rahmi (Universitas Andalas, Indonesia)



November 28 (Fri)

13:00 - 13:50	Poster Session 3 CHAIRS Jang-Hyun Baek (Kangbuk Samsung Hospital, Korea) Kang Ho Choi (Chonnam National University Hospital, Korea)	Sydney (2F)
17:40 - 19:00	Poster Session 4 CHAIRS Kyusik Kang (Nowon Eulji Medical Center, Korea) Sang-jun Ahn (Catholic Kwandong University Medical Center, Korea) Mi-Yeon Eun (Kyungpook National University Chilgok Hospital, Korea) Young Dae Kim (Severance Hospital, Korea)	Sydney (2F)

Poster Session 3

Zone 1	CHAIR: Jang-Hyun Baek (Kangbuk Samsung Hospital, Korea)	Poster Room
PA-301	Evaluating the Beneficial Effects of an Iyengar Yoga Program Combined with Tinospora cordifolia (Giloy) Juice in Stroke Rehabilitation Ranbir Singh(Shri Maha Maya Vaishnav Devi Research Institute, India)	
PA-302	Epigenetic Regulation of Histidine-Rich Glycoprotein Expression Modulates Immune Responses Following rt-PA in Acute Ischemic Stroke: Plasma Proteomic Variations for Personalized Therapy Anindya Amanda Damayanti(Islam Indonesia University, Indonesia)	
PA-303	Rehabilitation Effects of Mechanoacoustic Vibration Therapy on Mobility, Bone Strength, and Sleep Quality in Elderly Women with Post-Stroke Complications Ajay Khajuria (Nehru Gram Bharati University, India)	
PA-304	A Global Macroeconomic Evaluation of the Cost-Effectiveness of Primary and Secondary Stroke Prevention Strategies Yesika Simbolon (Atmajaya University, The Pranala Institute, Indonesia)	
PA-305	Examining the Impact of New and Improved Biologic Therapies on Outcomes for Patients with Moderate to Severe Stroke Asriati Asriati (Cendrawasih University, The Pranala Institute, Indonesia)	
PA-306	Transforming Elderly Stroke Care: The Impact of Digital Aging, Social Capital, and Economic Factors in Indonesia Gracce Sonya Sinaga (Atmajaya University, The Pranala Institute, Indonesia)	
PA-307	The Effectiveness of Music Therapy on Motor, Language, and Psychosocial Outcomes in Post-Stroke Rehabilitation: A Systematic Review and Meta-Analysis Muhammad Irzaq (Alumnus Padang State University, Indonesia)	
PA-308	Identifying the Feasibility of Hybrid Therapeutic Education for Stroke Patients: A Systematic Literature Review Rahmat Fauzan (Alumnus State University Of Padang, Indonesia)	
PA-309	Association Between Insomnia and Quality of Life in Patients Undergoing Post-Stroke Rehabilitation Parag Rane (Nims University, India)	

PA-310	Analysis of the Impact of Murattal Al-Quran on Stroke Patients in Indonesia: A Systematic Literature Review Siska Azizah (Baiturrahmah University, Indonesia)
PA-311	The impact of aromatherapy on stroke patients in overcoming anxiety, lack of sleep, and fatigue levels: literature review Rahmat Fauzan (Alumnus State University Of Padang, Indonesia)
PA-312	Impact of Statin-Ezetimibe combination therapy on small dense LDL and serum amyloid beta in stroke patients Jun Beom Lee (Hong Ik Hospital, Korea)
PA-313	The Impact of Cerebral Small Vessel Disease on Functional Recovery after Intracerebral Hemorrhage: Stratified Analysis by Age Sook Joung Lee (Daejeon St. Mary’s Hospital. The Catholic University Of Korea, Korea)
PA-314	Direct Oral Anticoagulants in Pediatric Congenital and Acquired Heart Disease: Implications for Stroke Prevention – A Systematic Review and Meta-analysis Mohamed Elkasaby (Faculty Of Medicine, Al-Azhar University, Egypt)
PA-315	Cerebral embolic protection devices and transcatheter aortic valve implantation. Could stroke be avoided? A Meta-analysis of RCTs Mohamed Elkasaby (Faculty Of Medicine, Al-Azhar University, Egypt)
PA-316	The Relationship between Stroke Prevalence and Comorbidities, Happiness, Smoking Habits, and National Health Insurance Coverage in Indonesia: Spearman Correlation Analysis Using Open Government Data Derizal Derizal (Tungku Tigo Sajarangan Research Center, Indonesia)
PA-317	Evaluating Bleeding Risk Prediction Tools for Stroke Prevention in Atrial Fibrillation on Apixaban and Rivaroxaban: Do They Pass the Test? Shamin Mohd Saffian (Universiti Kebangsaan Malaysia, Malaysia)
PA-318	Global, Regional, and National Burden of Ischemic Stroke, Its Modifiable Factors, and Prevalence: An Analysis of the Global Burden of Disease Study 2021 Nisrina Nabila (Universitas Islam Indonesia, Indonesia)
PA-319	Microsurgical treatment of ethmoidal dural arteriovenous fistula Jinpyo Hong (Penn State Health Milton S. Hershey Medical Center, United States)

Zone 2	CHAIR: Kang Ho Choi (Chonnam National University Hospital, Korea)	Poster Room
PB-301	<b>Pathophysiology and Predictors of Stroke Recovery: Insights from a Meta-Analysis</b> Lintong Hottua Simbolon (The Pranala Institute, Indonesia)	
PB-302	<b>NAD<sup>+</sup> supplementation protects blood-brain barrier integrity in endothelial cells after inducing hemorrhagic stroke via enhancement of mitochondrial respiration</b> Junyoung Heo (Chungnam National University College Of Medicine, Chungnam National University College Of Medicine, Chungnam National University College Of Medicine, Korea)	
PB-303	<b>The Association between Whole Blood Viscosity and Small vessel disease markers</b> Do Yeon Kim (Seoul National University Bundang Hospital, Seoul National University Bundang Hospital, Korea)	

PB-304	Development of a Hemorrhage Severity Detection Algorithm in SAH Patients Using Frontal EEG Seung Young Chung (Daejeon Eulji Medical Center, Korea)
PB-305	Lipoprotein(a) and Its Relationship with Atherosclerotic Burden and Long-Term Vascular Outcome in East Asian Stroke Patients: A prospective Cohort Study Taewon Kim (Incheon St. Marys Hospital, College Of Medicine, The Catholic University Of Korea, Korea)
PB-306	Prospective Multicenter Validation of a Deep Learning Model for Ischemic Stroke Subtype Classification Wi-Sun Ryu (Jlk Inc., Korea)
PB-307	Concussion and Subsequent Stroke Risk: A Multi-National Real-World Evidence Study Using the TriNetX Network Chun-Wei Liu (Taipei Medical University Hospital, Taipei Medical University, Taiwan)
PB-308	Bioinformatics-Driven Arteriolar Regulatory Genomics-Informed Polygenic Risk Modeling for Stratification and Prevention in Intracranial Atherosclerotic Stroke Rini Winarti (Nextgen Biology And Health Equity Research Network, Indonesia)
PB-309	Emotional Distress as a Risk Factor for Inadequate Recovery and Recurrent Stroke: A Psychosocial Perspective Nida Khoirotunnisa (Universitas Islam Indonesia, Indonesia)
PB-310	Correlation of Dietary Habit Among Hypertension Patient in Asia with Stroke Incident Ahmad Azhari (Universitas Muhammadiyah Kalimantan Timur, Indonesia)
PB-311	Utilizing Open Government Data for GIS Mapping of Stroke Disease Vulnerability in Indonesia's 34 Provinces Derizal Derizal (Tungku Tigo Sajarangan Research Center, Indonesia)
PB-312	Colchicine for Secondary Stroke Prevention in Asian Countries: A Systematic Review Samantha Karla Inoncillo (University Of Santo Tomas Hospital, Philippines)
PB-313	Multiple Regression Model to Analyze the Impact of Environmental Factors, Health Allocation, and Business Field on the Risk of Death from Ischemic Stroke in Indonesia Putri Ayu (Andalas University, Indonesia)
PB-314	Medicinal Plants as Neuroprotective Agents: Exploring Phytochemical Pathways for Stroke Prevention Aqsa Munawar Rao (University Of Agriculture Faisalabad, Pakistan)
PB-315	The impact of SGLT2 inhibitor treatment on thrombus composition and functional outcome after endovascular thrombectomy Matthew Chung (Seoul National University Hospital, Korea)
PB-316	Intra-Arterial tPA as a Rescue Therapy for Refractory Large Vessel Occlusion: a case report Sung Sik Kim (Daegu Good Morning Hospital, Korea)
PB-317	Comparison of Automated MRI Perfusion Analysis Software: Agreement in Ischemic Penumbra Estimation and Decision-Making for Endovascular Thrombectomy Jonguk Kim (Seoul National University Bundang Hospital, College Of Medicine, Seoul National University, Korea)
PB-318	Early Hyperperfusion Phenomenon Following Successful Thrombectomy: A Quantitative CT and MR Perfusion Analysis Jonguk Kim (Seoul National University Bundang Hospital, College Of Medicine, Seoul National University, Korea)

Poster Session 4

Zone 1	CHAIR: Kyusik Kang (Nowon Eulji Medical Center, Korea)	Poster Room
PA-401	Incident of Stroke Among Young Population in Asia: Trend of research in the past decade Ahmad Azhari (Universitas Muhammadiyah Kalimantan Timur, Indonesia)	
PA-402	Real-World Use of Evolocumab in Acute Large Artery Atherosclerotic Stroke: A Nationwide Registry Study Do Yeon Kim (Seoul National University Bundang Hospital, Korea)	
PA-403	Impact of a Mobile Image-Sharing Application on Inter-Hospital Transfer Times for Acute Stroke Patients Do Yeon Kim (Seoul National University Bundang Hospital, Korea)	
PA-404	Frequency Of Early Onset Seizures in Acute Stroke Patients Rashid Usman (Fauji Foundation Hospital, Pakistan)	
PA-405	Retrospective Clinical Audit of Post-Thrombolysis Intracranial Haemorrhage in Acute Ischaemic Stroke: Experience from Tertiary Centre in Kelantan, Malaysia (Jan 2024–Jun 2025) Khairul Azman Mustapha (Hospital Raja Perempuan Zainab II, Malaysia)	
PA-406	Bridging versus Direct Thrombectomy in Acute Ischemic Stroke Patients with Low ASPECTS Jia-Hung Chen (Taipei Medical University - Shuang Ho Hospital, Taiwan)	
PA-407	The Post-Stroke Triad: Disparities in Care Satisfaction, Psychological Sequelae, and Nutritional Risk Among Indonesian Elderly Rosinta Hotmaida Pebrianti Purba (The Pranala Institute, Indonesia)	
PA-408	Malnutrition in Geriatric Stroke Disease: An Investigation of Critical Risks of Nutritional Status Hepri Ardianson (The Pranala Institute, Indonesia)	
PA-409	Caregiver Perception, Knowledge, and Attitude Toward Postoperative Recovery Among Patients With Stroke Disease Igna Abdul Gopur Lukmana (The Pranala Institute, Indonesia)	
PA-410	Impact of Hyperglycemia and Glycemic Variability During Acute Period on Stroke Associated Pneumonia Ki-Woong Nam (Seoul Metropolitan Government-Seoul National University Boramae Medical Center, Korea)	
PA-411	Small Vessel Disease Burden and Futile Reperfusion After Successful Recanalization: Mediation by Infarct Growth Rate Sang-Hwa Lee (Hallym University Chuncheon Sacred Heart Hospital, Korea)	
PA-412	Effectiveness of a Regional Hotline System in Optimizing Inter-Hospital Stroke Transfers and Treatments Junghwa Seo (Dong-A University Hospital, Korea)	
PA-413	Injectable Ultrathin and Biodegradable Sensor for Large-Area Monitoring of Cerebral Cortex Blood Flow Do-Hoon Kwon (Seoul National University, Korea)	

PA-414	The benefit and safety of minimal-dose intravenous heparin injection during mechanical thrombectomy : a single center retrospective study Heejung Mo (Inha University Hospital, Korea)
PA-415	Machine Learning-Based Prediction of Unfavorable Outcomes in Embolic Stroke of Undetermined Source Jin-Man Jung (Korea University Ansan Hospital, Korea University College Of Medicine, Korea)

Zone 2	CHAIR: Sang-jun Ahn (Catholic Kwandong University Medical Center, Korea)	Poster Room
PB-401	Diagnostic Performance of Post-Contrast FLAIR Versus Post-Contrast T1-Weighted Imaging MRI for the Detection of Meningitis: A Systematic Review and Meta-Analysis Lauradew Charleneva Ardent Cinta Pitoy (University Of Palangka Raya, Indonesia)	
PB-402	Integrating Nutrition and Lifestyle Interventions for Stroke Prevention and Survivorship in Indonesia : A Population-Based Perspective Hanna Rosanti (Atmajaya University, Indonesia)	
PB-403	Health and Economic Costs of Stroke in Southeast Asia: An Analysis of Productivity Lost Sarai Bergita Br Sitepu (Atmajaya University, Indonesia)	
PB-404	National Trends in Stroke Burden in Taiwan from 2006–2021: Incidence, Mortality, and Disability-Adjusted Life Years Chih-Hao Chen (National Taiwan University Hospital, Taiwan)	
PB-405	Global Disparities in Ischemic Stroke Prevalence Among Working-Age Adults: Patterns Across Socio-Demographic Index Countries in 2021 Najwa Aisy Putri (International Open University, Indonesia)	
PB-406	Epidemiological Patterns of Ischemic Stroke across Socio-Demographic Index Levels: A Comparative Analysis between High and Low SDI Population Zavia Putri Salsabila (Universitas Islam Indonesia, Indonesia)	
PB-407	Association of weekend catch-up sleep with the atherosclerotic cardiovascular disease risk score: a hypothesis-generating study from US and Korean National Health and Nutrition Examination Surveys Tae-Jin Song (Seoul Hospital, Ewha Womans University College Of Medicine, Korea)	
PB-408	KNOWLEDGE AND PERSONALITY AMONG NURSING STUDENTS RELATED WITH PATIENT SAFETY IMPLEMENTATION Ahmad Azhari (Universitas Muhammadiyah Kalimantan Timur, Indonesia)	
PB-409	Bridging Gaps in Pediatric Dystonia Care: Perspectives of Primary Health Care Providers in Rural India Umesh Gangadhar (F H M College And Hospital, India)	
PB-410	Blood Pressure Status and Risk of Cardiovascular Disease in Older Adults Aged 75+ Without Prior Cardiovascular Events: A Nationwide Cohort Study Myun Kim (Hallym University Sacred Heart Hospital, Korea)	
PB-411	Burden of Stroke in the United States of America, 1990–2021: A systematic analysis for the US Burden of Disease Study 2021 Yoonkyung Chang (Mokdong Hospital, Ewha Womans University College Of Medicine, Korea)	

PB-412	Saving Young Brains: Adolescent Stroke Reversed with Thrombolysis Faizatul Asna Abd Aziz (Hospital Universiti Sains Malaysia, Malaysia)
PB-413	Case report : Persisent hypoglossal artery with ipsilateral carotid stenosis and pontine infarction. Il Hyung Lee (Kyung Hee University At Gangdong, Korea)
PB-414	Alice in Wonderland Syndrome as a Manifestation of Posterior Cerebral Artery Infarction: A Case Report Michelle Sojung Youn (Nowon Eulji Medical Center, Eulji University School Of Medicine, Korea)
PB-415	Patent Foramen Ovale Closure in an Elderly Patient with Recurrent Cerebral Infarction and Platy-pnea–Orthodeoxia Syndrome Seo Hyun Kim (Yonsei University Wonju College Of Medicine, Korea)

Zone 3	CHAIR: Mi-Yeon Eun (Kyungpook National University Chilgok Hospital, Korea)	Poster Room
PA-451	Fabrication of a Monorail-type Diagnostic Catheter for Rescue Retrieval Technique of a Distal Embolic Protection Device Hae-Bong Jung (Chung-Ang University, Korea)	
PA-452	Repeated Endovascular Thrombectomy in Acute Ischemic Stroke with Large Vessel Occlusion: Recurrence patterns, Contributing Factors, and Clinical Outcomes Chang Hun Kim (Gyeongsagn National University Hospital, Korea)	
PA-453	Mislocalization of the Culprit lesion by CT perfusion scan in patients with hyperacute stroke and large vessel occlusion Hee-Kwon Park (Inha University Hospital, Korea)	
PA-454	Spontaneous Angiographic Disappearance of an Intracranial Aneurysm: A Systematic Review of Cases in the Last Ten Years and Two Cases from Our Institution. Kuhyun Yang (Gangneung Asan Hospital, University Of Ulsan College Of Medicine, Korea)	
PA-455	A Case Report on Manual Aspiration for a Carotid Thrombus During Carotid Angioplasty and Stenting Seong Hwan Ahn (Chosun University Hospital, Korea)	
PA-456	Endovascular trajectory after downstream occlusion: Angiographic and clinical implications Jang-Hyun Baek (Kangbuk Samsung Hospital, Sungkyunkwan University School Of Medicine, Korea)	
PA-457	Identification of Biomarkers Predicting Carotid Plaque Instability and Stroke Risk through Transcriptomic Profiling Nadyatul Husna (Dr. Reksodiwiryo Military Hospital, Indonesia)	
PA-458	Recurrent Ischemic Stroke in a CYP2C19 Intermediate Metabolizer A Case for Genotype-Guided Antiplatelet Therapy Truong Minh Ngo (Can Tho Stroke International Services General Hospital, Vietnam)	
PA-459	Inflammatory Biomarkers and Imaging Density as Determinants of Stroke Severity in Intracranial Atherosclerosis Muhammad Yunus Amran (Faculty Of Medicine, Hasanuddin University, Brain Centre, Dr. Wahidin Sudirohusodo General Hospital, And Hasanuddin University Teaching Hospital., Indonesia)	

PA-460	<b>Blood-Derived Extracellular Vesicle and Neutrophil microRNA Machine Learning Approach for Intracranial Atherosclerotic Stroke Classification and Hemorrhagic Transformation Risk Prediction</b> Rifaldy Fajar (Imcds-Biomed Research Foundation, Indonesia)
PA-461	<b>Interpretable AI-Driven Framework for Predicting Intracranial Atherosclerosis Using Multi-Omics Data</b> Firdian Makrufardi (Medical, Molecular, And Data Science Research Foundation, Indonesia)
PA-462	<b>Malignant MCA Infarction with Dilated Cardiomyopathy and Atrial Fibrillation: Multidisciplinary Challenges in Stroke Reperfusion and Heart Failure Management</b> Khairul Azman Mustapha (Hospital Raja Perempuan Zainab II, Malaysia)
PA-463	<b>Impact of the RNF213 p.R4810K Variant on Clinical Characteristics and Treatment Outcomes in Patients with Intracranial Artery Stenosis With and Without Endovascular Treatment</b> Kentaro Tatsuno (St Marianna University, St Marianna University, Japan)
PA-464	<b>Mathematical Modeling of Disturbed Intracranial Shear Stress, Endothelial PKN1-Mediated H3.3S31 Epigenomic Activation, and Macrophage-Driven Matrix Degradation for Predicting Fibrous Cap Failure Risk in Intracranial Atherosclerosis</b> Prihantini Prihantini (Imcds-Biomed Research Foundation, Indonesia)
PA-465	<b>Automated Intracranial Atherosclerosis Detection and Prognosis: Toward Reproducible Stroke Risk Prediction.</b> Ester Marnita (Raff Tindal Nt, The Pranala Institute, Korea)
PA-466	<b>Statin Therapy Reduces Vertebral Artery Atherosclerotic Plaques</b> Sang Yeon Kim (Jeonbuk National University Hospital & School Of Medicine, Korea)
PA-467	<b>Etiology of pontine infarction: a study based on high-resolution magnetic resonance imaging</b> Triet Huynh (115 People's Hospital, Vietnam)

**Zone 4**
CHAIR: Young Dae Kim (Severance Hospital, Korea)
Poster Room

PB-451	<b>Unhealthy Lifestyle and Cardiovascular Disease Risk in Older Adults Aged 75+ Without Prior Cardiovascular Events: A Nationwide Cohort Study</b> Dong A Yea (Hallym University Sacred Heart Hospital, Korea)
PB-452	<b>Denosumab on Bone Mineral Density in Patients with Cerebral Infarction and Osteoporosis</b> Jiwook Hwang (Daegu Catholic University Hospital, Korea)
PB-453	<b>Association between thyroid hormone level and post-stroke cognitive impairment in euthyroid state patients</b> Je Kook Yu (Hallym University Sacred Heart Hospital, Korea)
PB-454	<b>Quantitative Ischemic Core Volume on Multimodal Imaging Outperforms ASPECTS for Outcome Prediction in Large Core Stroke after Thrombectomy</b> Hokyu Kim (Korea University Guro Hospital, Korea)
PB-455	<b>Impact of Anticoagulation Timing on Early Neurological Deterioration in Patients with Acute Large Vessel Occlusion and Atrial Fibrillation Undergoing Mechanical Thrombectomy</b> Junho Seong (Dong-A University Hospital, Korea)

PB-456	<b>The Importance of Atypical Etiologies: A Case Study of a Patient Unresponsive to Reperfusion Therapy</b> Changmok Lim (Kangwon National University, Korea)
PB-457	<b>Post-Thrombolysis Lipoprotein(a) Levels and Hemorrhagic Transformation in Acute Ischemic Stroke</b> Chaery Jeon (Hallym University Sacred Heart Hospital, Hallym University College Of Medicine, Korea)
PB-458	<b>Adjunctive Intraarterial Thrombolysis after Thrombectomy in Large Vessel Occlusion Stroke: A Meta-Analysis of RCTs</b> Sung Jo Bang (Keimyung University School Of Medicine, Korea)
PB-459	<b>Effect of In-Hospital Anticoagulation on Outcomes in Infective Endocarditis Complicated by Acute Ischemic Stroke</b> Jeong Kyu Lee (Asan Medical Center, Korea)
PB-460	<b>Prognostic Differences in Acute Ischemic Stroke Patients with Concomitant Heart Failure: Between HFrEF and HFmrEF</b> Jeong Kyu Lee (Asan Medical Center, Korea)
PB-461	<b>Association between Pleural effusion and Clinical Prognosis in Patients with Acute Ischemic Stroke</b> Un-Chang Heo (Jeju National University Hospital, Jeju National University College Of Medicine, Korea)
PB-462	<b>Brain Lesion Pattern and Hemorrhagic Transformation in Patients with Acute Ischemic Stroke and Infective Endocarditis: Comparisons by Microorganisms</b> Kwanju Song (Asan Medical Center, Sangun-Myeon Health Sub-Center, Bonghwa-Gun Public Health Center, Korea)
PB-463	<b>“Vessel Wall MRI Enhancement Patterns and Infarction Risk in RNF213-Positive Moyamoya Patients”</b> Keon Yeup Kim (Asan Medical Center, Korea)
PB-464	<b>Utility of Vessel Wall MRI in Diagnosing Rotational Vertebral Artery Occlusion</b> Eunbuel Ko (Uijeongbu St. Mary's Hospital, Korea)
PB-465	<b>Endovascular Thrombectomy in Infective Endocarditis: A Case Highlighting Clinical Equipoise and Infectious Complications</b> Won Jin Lee (Dong-San Hospital, Keimyung University School Of Medicine,dong-San Hospital, Keimyung University School Of Medicine, Korea)
PB-466	<b>A case of Thromboembolic Stroke caused by arterial Thoracic Outlet Syndrome</b> Moses Lee (Korea University Guro Hospital, Korea)
PB-467	<b>Hyperperfusion Seizure During Treatment for Vasospasm after Carotid Artery Stenting: A Case Report</b> Taehun Kwon (Seoul National University Hospital, Korea)
PB-468	<b>Herpes simplex virus encephalitis, negative cerebrospinal fluid analysis, as an underrecognized etiology of cerebral infarction</b> Iljung Hwang (The Catholic University Of Korea, Seoul St. Marys Hospital, Korea)
PB-469	<b>Rapid Development of a Posterior Communicating Artery Aneurysm Presenting with Painful Oculomotor Palsy: A Case Report</b> Won Cheol Jeong (Republic Of Korea Army, Korea)



## Sponsors List

### DIAMOND



### PLATINUM



### GOLD +



### GOLD



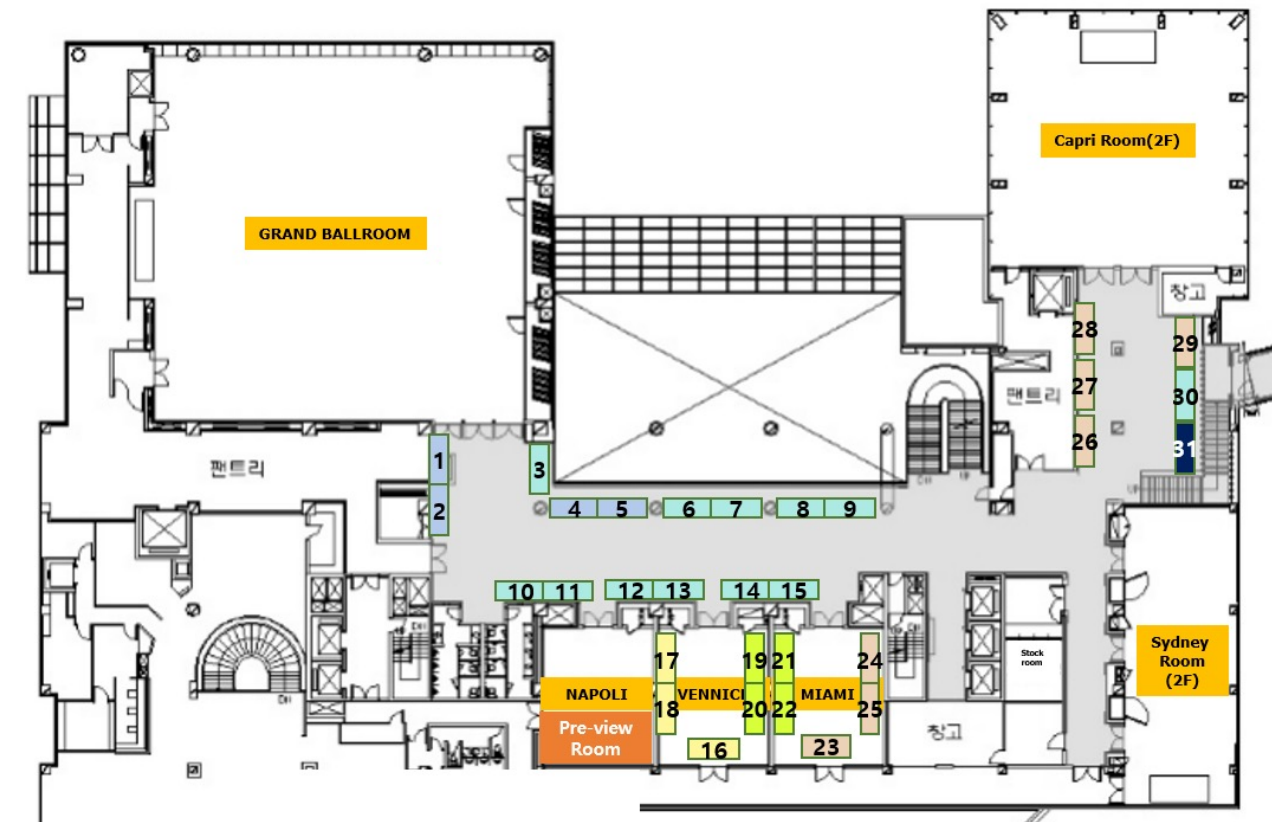
### SILVER



### BRONZE



## Exhibition Layout



BOOTH NO.	COMPANY
1-2	Sanofi-Aventis Korea
4-5	Amgen Korea
6-7	DAEWOONG BIO INC.
8-9	MYUNG IN PHARM
10-11	Chong Kun Dang Pharm
12-13	Daiichi-Sankyo, DAEWOONG
14-15	SK chemicals
3, 30	Korea Otsuka Pharm.
16	SAMJIN PHARM.
17	Viartis Korea
18	Organon
19	Pfizer

BOOTH NO.	COMPANY
20	Hanmi Pharm
21	Mitsubishi Tanabe Pharma Korea
22	BORYUNG
23	DONG-A ST
24	KOREA UNITED PHARM
25	Yuhan Co.
26	JLK, Inc.
27	JW Pharmaceutical
28	Heuron
29	Boehringer Ingelheim
31	Korean Stroke Society

## NOTE

## NOTE

## NOTE

## NOTE

NOTE

## NOTE



## NOTE

## NOTE



Plavix®

## 항혈소판 치료의 변치 않는 기준

죽상혈전증의 모든 영역<sup>\*</sup>에서 일관된 효과와 양호한 내약성을 확인한  
플라빅스<sup>®</sup>는 국내에서 25년 이상<sup>†</sup>의 처방 경험과  
수많은 연구 결과<sup>‡</sup>를 보유한 Original Clopidogrel입니다.<sup>2-6</sup>

플라빅스<sup>®</sup> 효능·효과: 1. 허혈뇌졸중, 심근경색 또는 말초동맥성질환이 있는 성인 환자에서 죽상동맥경화성 증상의 개선 2. 급성관상동맥증후군(불안정성 협심증 또는 비Q파 심근경색 환자에서 있어서 약물치료 또는 관상중재시술(PCI)(stent 시술을 하거나 하지 않은 경우) 및 관상동맥회로우회술(CABG)을 받았거나 받을 환자를 포함)이 있는 성인 환자에서 죽상동맥경화성 증상(심혈관계 이상으로 인한 사망, 심근경색, 뇌졸중 또는 불응성 허혈)의 개선 3. 한 가지 이상의 혈관성 위험인자를 가지고 있고, 비타민 K 길항제(VKA) 투여가 적합하지 않으며, 출혈 위험이 낮은 심방세동 성인 환자에서 뇌졸중을 포함한 죽상혈전증 및 혈전색전증의 위험성 감소; <sup>\*</sup>ACS, ischemic stroke, MI, atherosclerotic PAD; <sup>†</sup>최초 국내 출시 1998년; <sup>‡</sup>ClinicalTrials.gov. search for 'Plavix' and recited status: completed, 644 studies

ACS, acute coronary syndrome; A-fib, atrial fibrillation; CABG, coronary artery bypass graft; MI, myocardial infarction; PAD, peripheral arterial disease; PCI, percutaneous coronary intervention; VKA, vitamin K antagonists.

References. 1. 의학품안전관리위원회. 플라빅스정75밀리그램. Available at <https://nedrug.mfds.go.kr/pbp/CCB8801/getItemDetailCache?cacheSeq=200700907&updateTs=2025-02-25%2017:33:13.612008b>. Accessed on Mar. 11, 2025. 2. Yusuf S, et al. *N Engl J Med*. 2001;345(7):484-502. 3. CAPRIE Steering Committee. *Lancet*. 1996;348(9038):1329-1339. 4. 의학품안전관리위원회. 플라빅스정75밀리그램. 안전성·유효성 심사결과 공개양식. 5. ClinicalTrials.gov. Plavix, completed studies. Available at <https://clinicaltrials.gov/search?ntr=Plavix&aggFilters=status:com>. Accessed on Feb. 28, 2025. 6. Gomez Y, et al. *J Pharm Biomed Anal*. 2004;34(2):341-348.

sanofi  
서울특별시 서초구 반포대로 235  
Tel. 02-2136-9000 | [www.sanofi.co.kr](http://www.sanofi.co.kr)

Plavix

플라빅스정75밀리그램(클로피도그렐황산염)  
플라빅스정75밀리그램의 제품정보는 우측의 QR 코드를 통해 확인하시기 바랍니다.  
(문안개정년월일 2022.10.06).



MAT-KR-2500466-10-03/2025

AMGEN

Repatha<sup>®</sup>  
(evolocumab)

For your very high-risk  
Atherosclerotic Stroke patients  
When every minute counts

Detect the  
Signs

Don't Wait. Act now. Add Repatha<sup>®</sup>



<sup>\*</sup>Atherosclerotic Cardiovascular Disease in Repatha<sup>®</sup> Indications

To reduce the risk of cardiovascular events by lowering LDL-C levels, as an adjunct to correction of other risk factors, in adult patients with established atherosclerotic cardiovascular disease.

AMGEN

20th Floor, Ferrum Tower, 19 Eulji-ro 5-gil, Jung-gu, Seoul, Republic of Korea (04539).  
For inquiries related to pharmaceutical products, please contact the Amgen Medical Information Team.  
Phone: 00798-611-3554 (Toll-Free), +82-2-3434-4899 Email: [medinfo.JAPAC@amgen.com](mailto:medinfo.JAPAC@amgen.com)

Product information  
Repath<sup>®</sup>Inj.Pre-filled pen 140 mg

Before prescribing, please refer to the detailed product information  
via the QR code or the MFDS Drug Information  
(<https://nedrug.mfds.go.kr/searchDrug>).



KOR-145-0425-80005



# Cilostazol + Ginkgo biloba ext.

## 복합 서방정



# Renexin CR

## Renexin CR Tab.

Cilostazol 200mg,  
Ginkgo Biloba ext. 160mg

### 리넥신서방정 제품요약정보<sup>1)</sup>

**【제품명】** 리넥신서방정 **【원료약품 및 그 분량】** 이 약 1정 중 유효성분 : 실로스타졸(OP) ~200 mg, 은행엽건조엑스(생규) ~160 mg **【성상】** 연두색의 타원형 서방성 필름코팅정 **【효능·효과】** 다음 질환에 대하여 실로스타졸 단독요법으로 효과가 불충분한 경우, 실로스타졸과 은행엽건조엑스 제제의 병용요법에 대한 대체요법 1. 만성동맥폐색증(버거씨병, 폐색성 동맥경화증, 당뇨병성 말초혈관병증 등)에 따른 괴양, 동통 및 냉감 등 허혈성 제증상의 개선 2. 뇌경색(심인성 뇌색전증 제외) 발증 후 재발억제 **【용법·용량】** 이 약은 서방정 정제이므로 분쇄하거나 분할 또는 씹지 않고 전체를 복용하며, 식사를 피하여 공복 상태에서 복용한다. 이 약은 1회 용량으로 실로스타졸 100밀리그램과 은행엽건조엑스 80밀리그램을 1일2회 병용투여시 효과가 충분한 성인 환자에 대하여 대체요법으로 투여한다. 통상 성인에 대하여 1일1회, 1회 1정을 경구 투여한다. **【사용상의주의사항】** 1. 경고, 이 약은 실로스타졸 투여로 인해 맥박수가 증가하여 협심증이 발현될 수 있으므로 협심증의 증상(가슴통증 등)에 대한 문진을 주의깊게 실시한다(뇌경색 재발 억제효과를 검토하는 시험에서, 장기간에 걸쳐 PRP(pressure rate product)를 의미있게 상승시키는 작용이 인정되었다. 또한, 실로스타졸 투여군에서 협심증이 발현된 증례가 나타났다). 2. 다음 환자에는 투여하지 말 것. 1) 출혈(혈우병, 모세혈관 취약증, 두개내출혈, 상부소화관출혈, 오로출혈, 객혈, 초저체출혈 등) 또는 그러한 소인(활동성 소화궤양, 최근 6개월 이내에 출혈성뇌졸중, 3개월 이내에 외과수술, 증식당뇨망막병증, 조절되지 않는 고혈압)이 있는 환자(출혈을 조정할 우려가 있다) 2) 울혈성심부전 환자(증상을 악화시킬 우려가 있다) 3) 이 약 및 이 약의 구성성분에 과민반응의 병력이 있는 환자 4) 임부 또는 임신하고 있을 가능성이 있는 여성 및 수유부 3. 다음 환자에는 신중히 투여할 것. 1) 항응고제(와파린 등), 항혈소판제(아스피린, 티클로피딘 등), 혈전용해제(유로키나제, 알테플라제 등), 프로스타글란딘 E<sub>1</sub> 제제 및 그 유도체(알프로스타딜, 리마프로스트 알파엑스 등)를 투여중인 환자 2) 월경기간 중인 환자(출혈을 조정할 우려가 있다) 3) 관동맥 협착의 합병증 환자(이 약의 투여에 의한 맥박수 증가로 협심증을 유발할 가능성이 있다.) 4) 중증 신장에 환자(크레아티닌 청소율 ≤ 25 mL/분)(이 약의 대사물의 혈중농도가 상승될 수 있다.) 5) 중등도 또는 중증 간장에 환자(이 약의 혈중농도가 상승될 수 있다.) 6) 당뇨병 또는 내당능 장애가 있는 환자(출혈성 유해증상이 발현하기 쉽다.) 7) 지속적으로 열압이 상승하고 있는 고혈압 환자(약성고혈압 등) 8) 심방이나 심실전위 환자, 심방세동이나 조동 환자, 심실빈맥, 심실세동 또는 다초점성심실이상성박동 환자, QT간격의 연장이 있는 환자 9) S자형 심실 중격이 있거나 위험이 있는 환자(특히 고령자) : S자형 심실 중격 환자에서 좌심실 유출로 폐쇄가 보고되었다. 실로스타졸 복용 시작 후 새로운 수축기 잡음 혹은 심장 증상의 발생 여부를 모니터링 한다. **【제조자】** 에스케이케미칼(주) 충청북도 청주시 흥덕구 산단로 149 **【판매자】** 에스케이케미칼(주) 경기도 성남시 분당구 판교로 310 2020.11.23 개정

※ 처방하기 전 제품설명서 전문을 참고하십시오. 최신 허가사항에 대한 정보는 '식품의약품안전처 의약품안전나라 (<https://nedrug.mfds.go.kr/index>)'에서 확인할 수 있습니다.

Reference. 1. 식약처 의약품안전나라 의약품통합정보시스템. 의약품 등 정보검색(검색어: 리넥신서방정). Available at <https://nedrug.mfds.go.kr/searchDrug>. Accessed on 05 of Feb, 2024.

**SK 케미칼**  
Life Science Biz. 경기도 성남시 분당구 판교로 310(삼평동) Tel 080-021-3131 [www.skchemicals.com/lis](http://www.skchemicals.com/lis)

**리넥신 서방정**  
Cilostazol 200mg,  
Ginkgo Biloba ext. 160mg

once-daily  
**Lixiana**<sup>®</sup>  
edoxaban

릭시아나<sup>®</sup>는 비판막성 심방세동 환자에서  
뇌졸중 및 전신색전증 위험 감소를 위한 3가지 용량이 있습니다.<sup>1)</sup>

ONCE-DAILY		
상용량		
릭시아나 <sup>®</sup> 60mg	릭시아나 <sup>®</sup> 30mg <small>허가사항*에 근거하여 용량 감량의 요인을 가진 환자</small>	릭시아나 <sup>®</sup> 15mg <small>허가사항*에 근거하여, 출혈 위험성이 높은 고령자의 경우 연령 및 상태에 따라 1일 1회 15mg 투여를 고려할 수 있음</small>
Standard dose	Reduced dose	Very low dose
* 허가사항은 QR코드로 확인 가능합니다.		



나이가 증가함에 따라 뇌졸중/전신색전증과  
주요 출혈 사건의 위험이 증가합니다.<sup>2)</sup>

### References

- 릭시아나<sup>®</sup>정(에독사반토실산염수화물) 제품설명서, 식품의약품안전처, 2023
- Kato, Eri Toda, et al. "Efficacy and safety of edoxaban in elderly patients with atrial fibrillation in the ENGAGE AF-TIMI 48 trial." *Journal of the American Heart Association* 5.5 (2016): e003432.

수입판매원

**Daiichi-Sankyo**

서울시 중구 을지로 5길 26 미래에셋 센터원 빌딩 동관 15층 T.02-3453-3300

공동판매원

**DAEWOONG**  
[www.daewoong.co.kr](http://www.daewoong.co.kr)

서울특별시 강남구 봉은사로 114길 12(삼성동) T.080-550-8308-9

Prescribing information



릭시아나정  
(에독사반토실산염수화물)

P25-175-2027-06-V1



*The lights on Alzheimer's dementia*



*Bearcept*

**BEARCEPT®**  
TAB/ODT

1. Proven Donepezil-Based Therapy
2. Supports Maintenance of ADL (Activities of Daily Living)<sup>1, 2</sup>
3. Improves Behavioral and Psychological Symptoms of Dementia (BPSD)<sup>3, 4, 5, 6</sup>
4. Enhances Cognitive Function with Demonstrated Efficacy<sup>7, 8, 9, 10</sup>

~5, 10, 23mg TAB / ~5, 10mg ODT



**Reference**

1. Feldman H, et al, J Am Geriatr Soc 2003;51:737-44. 2. Mehta S, et al, Indian J Psychiatry 2012;54:337-43. 3. Feldman H, et al, Int J Geriatr Psychiatry 2006;20:559-69. 4. Gauthier S, et al, Int Psychogeriatr 2002;14:389-404. 5. Holmes C, et al, Neurology 2004;63:214-19. 6. Martin M, et al, Alzheimer Disease & Associated Disorders 2011;25:333-40. 7. Whitehead A, et al, Int J Geriatr Psychiatry 2004;19:624-33. 8. Farlow MR, Psychiatry Clin Ther 2010;32:1234-51. 9. DeKosky S, Alzheimer Dis Assoc Disord 2003;17:S99-S104. 10. Winblad B, et al, Neurology 2001;57:489-495.

 명인제약(주)

*The safest  
& first choice* **Disgren®**

Triflusal 150mg, 300mg

**Dual mechanism**

- Platelet COX 1 inhibition
- Increase of cAMP

**Additional effect**

- Lower hemorrhagic complication
- NO increase / Neuroprotection





의약전문가용

藥房

各種藥品

First Choice  
리피로우® 정  
아토르바스타틴칼슘삼수화물

TO BE  
CKD STATIN,  
리피로우

Keep More Evidence for Korean

CKD, Chong Kun Dang

리피로우정 (아토르바스타틴칼슘삼수화물)

전문의약품

**[조상·성상]** 1. 원료약품의 분량 1정 중 유효성분: 리피로우정 10 mg - 아토르바스타틴칼슘삼수화물(별규) 10.85 mg (아토르바스타틴으로서 10 mg), 리피로우정 20 mg - 아토르바스타틴칼슘삼수화물(별규) 21.70 mg (아토르바스타틴으로서 20 mg), 리피로우정 40 mg - 아토르바스타틴칼슘삼수화물(별규) 43.40 mg (아토르바스타틴으로서 40 mg), 리피로우정 80 mg - 아토르바스타틴칼슘삼수화물(별규) 86.80 mg (아토르바스타틴으로서 80 mg). 2. 성상: 흰색의 달걀형 필름코팅정제. **[효능·효과]** 1. 다음의 심장혈관 질환에 대한 위험성 감소 2. 고지혈증 3. 식이요법에도 불구하고 여전히 아래의 기준에 해당되는 이형지혈 가족형 고콜레스테롤혈증을 가진 10~17세의 소아환자(여성의 경우 초경 이후의 환자)의 총콜레스테롤, LDL-콜레스테롤, 아포-B 단백 수치를 감소시키는 식이요법의 보조제(10, 20 mg에 한함). 4. LDL-콜레스테롤이 여전히 190 mg/dL 이상 (≥190 mg/dL)이거나 나. LDL-콜레스테롤이 여전히 160 mg/dL 이상 (≥160 mg/dL)이고 조기 심장혈관 질환의 가족력이 있는 경우 또는 해당 소아환자에서 두 가지 이상의 다른 심장혈관 질환의 위험인자가 있는 경우. **[용법·용량]** 1. 고지혈증 환자: 1일 1회 10~80 mg 범위로 투여. - 동형지혈 가족형 고콜레스테롤혈증 환자: 1일 1회 10~80 mg. 2. 이형지혈 가족형 고콜레스테롤혈증 소아환자(10~17세): 권장 초회용량 1일 10 mg, 권장 최대용량 1일 20 mg(10, 20 mg에 한함).

※ 자세한 내용은 제품설명서를 참고하시기 바랍니다.



종근당

LFU-GKD-202401338(Expire 202602)

소중한 환자의 건강한 혈관을 위해

프레탈이 걸어온 길,  
프레탈이 걸어갈 길.

Efficacy  
Safety  
and  
Trust

The 1<sup>st</sup> & Original Cilostazol PLETAAL

PLETAAL® SR cap.  
(cilostazol)

Otsuka  
한국오츠카제약  
Under license of Otsuka pharmaceutical co., Ltd

**[효능·효과]** 1. 만성동맥색증(버거씨병, 폐색성 동맥경화증, 당뇨병성 말초혈관병증 등에 따른 괴양, 동통 및 냉감 등 허혈성 증상상의 개선 2. 뇌경색(심인성뇌색전증 제외) 발증 후 재발억제

**[용법·용량]** 프레탈®정은 성인 1회 100mg을 1일 2회 경구 투여합니다. 단, 연령, 증상에 따라 적절히 증감합니다. 프레탈®서방캡슐은 성인 1회 200mg을 1일 1회 경구 투여합니다. 이 약은 식사를 피하여 공복 상태에서 복용합니다.

PUT-25-002 | 20250728 approved



35년 이상 축적된 신뢰와 함께,  
더 많은 **고혈압 환자의 치료**를 위해 계속 나아갑니다.

NORVASC

소아고혈압 적응증을 지닌  
**노바스크 2.5mg\*도 출시!**

\*소아 (만6~17세) 효과적의 혈압강하를 위한 아로디핀의 경우투여 용량은 1일 1회 2.5 mg~5 mg이다. 소아환자에서 1일 5 mg을 초과하는 용량은 연구되지 않았다.  
Safety info. Norvasc의 Amlodipine은 내약성이 좋습니다. 고혈압 및 협심증 환자에 대한 위약 대조 임상에서 가장 흔하게 나타나는 노바스크의 이상반응은 다음과 같습니다.  
일반적: 졸도 / 전신: 피로, 부종 / 심혈관계: 심계항진 / 중추 및 말초신경계: 현기증, 두통, 팔목 / 소화기계: 복통, 오심. 노바스크는 디하이드로피리딘계 약물에 관련된 환자.  
수유부, 중증의 간기능장애 환자, 중증의 대동맥판막질환 환자, 육안자해제 투여하지 않아야 합니다.  
노바스크는 중증의 저혈압 환자, 투석을 해야 하는 신부전 환자, 고령자, 임부 또는 임신하고 있을 가능성이 있는 여성 환자에게 신중히 투여해야 합니다.

References 1. 노바스크® 의약품 등 제조물명 허가증 (노바스크® 5 mg 허가일 1990.09.05 기준) 2. 노바스크정 제형설명서(최종보정제거일: 2024.08.30 (2.5 mg), 2024.08.03 (5 mg), 2024.10.07 (10 mg).

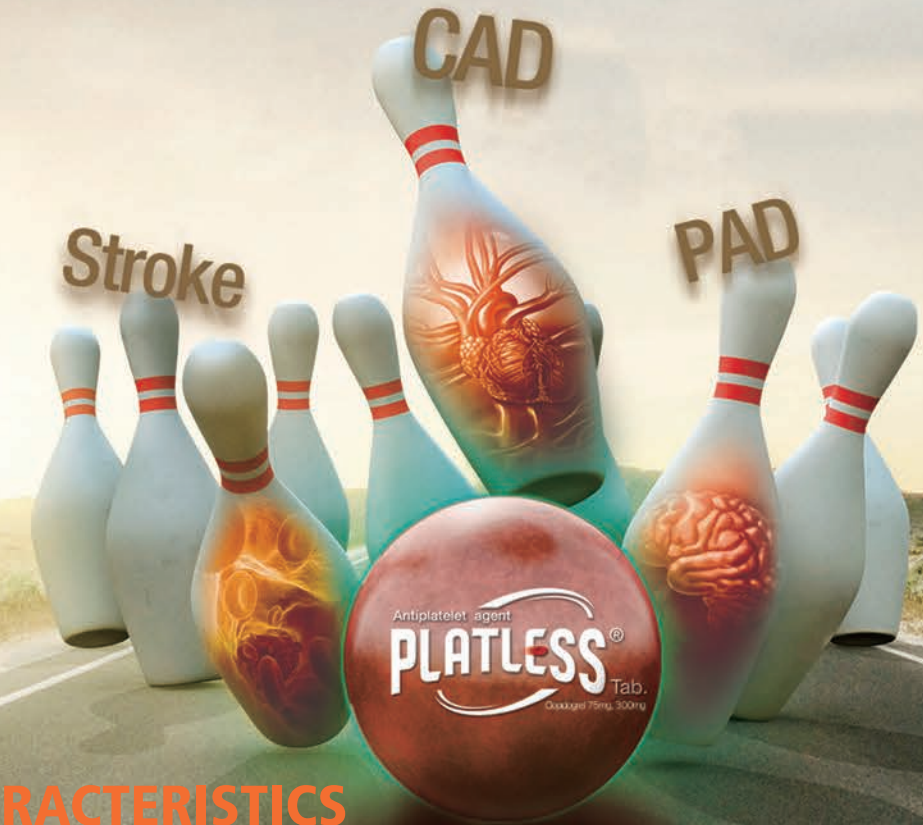
노바스크® 정 제형정보  
※ 제형에 대한 자세한 정보는  
최신의 제품설명서를 참고하시기 바랍니다.  
홈페이지 (www.viatris.co.kr)를 통해 확인하실 수 있습니다.



# PROTECT SIMPLY

from CAD, Stroke, PAD

혈소판 응집 억제제  
**PLATLESS®** Tab.  
Clopidogrel 75mg, 300mg



## CHARACTERISTICS

- **플래리스 75mg**
  - 플래리스, Clopidogrel 국내 제약사 중 1위 브랜드 등극 <sup>Ref1)</sup>
  - Aspirin 대비 높은 유효성과 안전성 입증 <sup>Ref3)</sup>
  - HOST-EXAM 외 다수의 국내 임상을 통해 한국인 유효성과 안전성 확보 <sup>Ref4, 5)</sup>
  - 자체생산, 특허받은 구상입자 원료를 통해 타사 대비 더 우월한 안정성 <sup>Ref6)</sup>
- **플래리스 300mg**
  - 국내 최초 Clopidogrel 300mg 고함량 제제, 플래리스 300mg 출시 <sup>Ref2)</sup>
  - Clopidogrel 75mg 4T 처방 대비 더욱 편리하고 경제적인 플래리스 300mg <sup>Ref7)</sup>

Ref1) UEBST Data(2017~2023년) Ref2) 플래리스 300mg 제품 허가사항, 식품의약품안전처 Ref3) Gent M, et al. "A randomised, blinded, trial of clopidogrel versus aspirin in patients at risk of ischaemic events", The Lancet, 1996, 348(9038):1329-39.  
Ref4) Koo B, Kang J, Park K, et al. "Aspirin versus clopidogrel for chronic maintenance monotherapy after percutaneous coronary intervention (HOST-EXAM): an investigator-initiated, prospective, randomised, open-label, multicentre trial" The Lancet, 2021, 397(10293):2487-96.  
Ref5) Data on File (Samjin 자체 임상) Ref6) Data on File (samjin 품질관리 시험 성적서) Ref7) 플래리스 300mg 23년 1월 보합약가 기준

**[효능·효과]** 1. 허혈뇌졸중, 심근경색 또는 말초동맥질환이 있는 성인 환자에서 죽상동맥경화성 증상의 개선 2. 급성관상동맥증후군(불안정성 협심증 또는 비Q파 심근경색 환자)에 있어서 약물치료 또는 관상중재시술(PCI(stent 시술을 하거나 하지 않은 경우) 및 관상동맥회로우회술(CABG)을 받았거나 받을 환자를 포함)이 있는 성인 환자에서 죽상동맥경화성 증상(심혈관계 이상으로 인한 사망, 심근경색, 뇌졸중 또는 불응성 허혈)의 개선 3. 한 가지 이상의 혈관성 위험인자를 가지고 있고, 비타민K길항제(VKA) 투여가 적합하지 않으며, 출혈 위험이 낮은 심방세동 성인 환자에서 뇌졸중을 포함한 죽상혈전증 및 혈전색전증의 위험성 감소  
**[용법·용량]** 1. 허혈뇌졸중, 심근경색 또는 말초동맥성 질환이 있는 환자에는 클로피도그렐로서 1일 1회 75mg을 경구투여한다. 2. 급성관상동맥증후군(불안정성 협심증 또는 비Q파 심근경색)이 있는 환자에는 이 약 투여개시일에 이 약으로서 1일 1회 300mg을 부하용량(loading dose)으로 시작하고 이후에 1일 1회 75mg을 유지용량으로 경구투여한다. 이 때 아스피린 75~325mg을 1일 1회 이 약과 병용투여하여야 한다. 3. 심방세동 환자에는 이 약으로서 1일 1회 75mg을 경구투여한다. 이 때 아스피린 75~100mg을 1일 1회 이 약과 병용투여하여야 한다.









**NOVASTAN<sup>®</sup> HI**  
Argatroban hydrate 10mg/2ml

within 48 Hours

Safe & Effective<sup>1</sup>

NOVASTAN<sup>®</sup> HI  
Argatroban hydrate 10mg/2ml

for a **Better Choice**<sup>2,3,4</sup>

IN OFF ON

**AIS**

48시간 이내 급성기 뇌혈전증 환자의 Standard Therapy에  
**NOVASTAN<sup>®</sup> HI**를 함께 고려해 주세요.

Ref. 1. Hou X, et al., J Clin Neurosci. 2021;90:225-32. 2. Zhang X, et al., JAMA Neurol. 2024;81(2):e118-125. 3. Kim J, et al., World Neurosurg. 2019;132:e341-e349. 4. Cui Y, et al., Neurotherapeutics. 2024 Jun 7:e00382.

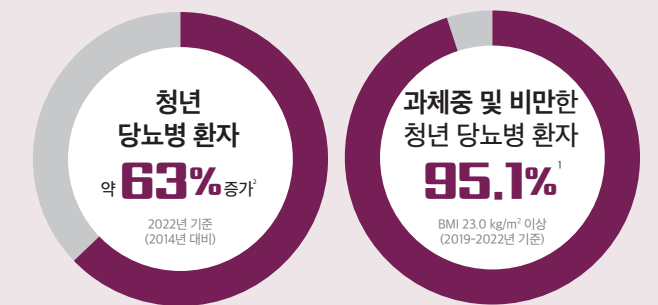


Mitsubishi Tanabe Pharma Korea

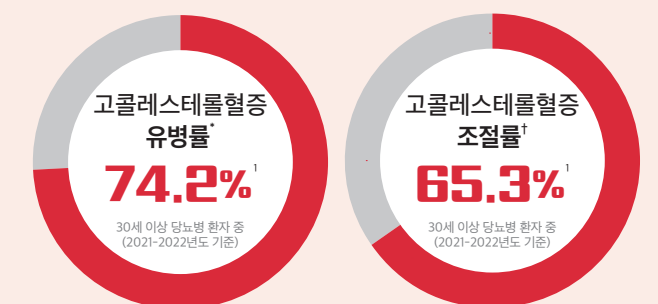
BORYUNG

국내 당뇨병 환자의  
혈당조절<sup>4</sup>을 통한  
합병증 예방<sup>5</sup>을 위해

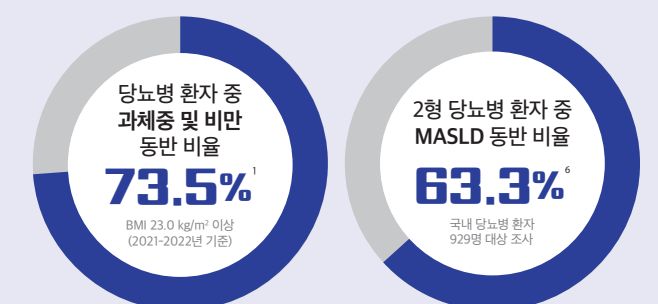
변화하는  
국내 당뇨병 환자의 특징에  
“꼭 필요한 **트루버디!**”



청년 당뇨병 환자가 증가하고 있으며, 대부분이 비만을 동반하고 있습니다.<sup>1,2</sup>



고콜레스테롤혈증을 동반한 당뇨병 환자의 비율이 높습니다.<sup>1</sup>



비만 및 대사 이상 지방간을 동반한 당뇨병 환자의 비율이 높습니다.<sup>1,6</sup>

MASLD, metabolic dysfunction-associated steatotic liver disease.

\*고콜레스테롤혈증 유병률: 혈중 LDL 콜레스테롤이 100 mg/dL 이상이거나 콜레스테롤강화제를 복용한 분율  
\*고콜레스테롤혈증 조절률: 혈중 LDL 콜레스테롤이 100 mg/dL 미만인 분율

References. 1. Se Eun Park et al. Diabetes Metab J. 2025;49:24-33 2. 2024 대한당뇨병학회 fact sheet 3. 2023 대한당뇨병학회 당뇨병 진료지침 4. Cho YK et al. Clin Ther. 2024;46(9):662-669 5. DeFronzo RA et al. Diabetes Obes Metab. 2016;18(5):454-62 6. Lee BW et al. Diabetes Metab J. 2020;44(3):382-401

트루버디정 10/15 mg, 10/30 mg은 다파글로플로진과 피오글리타존의 병용투여가 적합한 제2형 당뇨병 환자의 혈당조절을 향상시키기 위해 식사요법 및 운동요법 보조제로 허가받았습니다.

3R-1-TRB-25-003



대한민국 1등<sup>1)</sup>  
로수젯

International citations include:  
- RACING: Rosuvastatin vs. Atorvastatin in patients with atherosclerotic cardiovascular disease.  
- SCIENCE: Rosuvastatin and ezetimibe combination therapy vs. high-intensity statin monotherapy.  
- Various other studies from journals like JAMA, Lancet, and Circulation.

- 🇰🇷 **세계 최초** Rosuvastatin+Ezetimibe 복합제의 **CV Outcome 발표**<sup>2)</sup>
- 🇰🇷 국내사 개발 **전문의약품 최초** 원외처방조제액 **전체 1위**<sup>1)</sup>
- 🇰🇷 국내 환자 대상 로수젯 임상 연구 결과 **18편**, **SCIE급 저널 등재** (2025년 10월 기준)
- 🇰🇷 한미약품 **R&D** 및 자체 생산을 통한 **Global 진출**

10/2.5mg	10/5mg	10/10mg	10/20mg
30T(PTP), 100T(병)	30T(PTP), 100T(병)	30T(PTP), 100T(병)	30T(PTP), 100T(병)

ROS-II-2510-01 HM-Design 2509\_06

CV, cardiovascular; SCIE, Science Citation Index Expanded; R&D, research and development

Ref) 1. UBIST D1 Sales data. 2024년 원외처방조제액 기준. 2. Kim BK, Hong SJ, Lee YJ, et al. RACING investigators. Long-term efficacy and safety of moderate-intensity statin with ezetimibe combination therapy versus high-intensity statin monotherapy in patients with atherosclerotic cardiovascular disease (RACING): a randomised, open-label, non-inferiority trial. *Lancet*. 2022 Jul 30;400(10349):380-390.

# Unlock the power of triple therapy

- 당뇨병 위험 징후 없이  
고혈압, 이상지질혈증  
동시 관리<sup>1-4</sup>
- 국내 3상 임상  
혈압·지질 동시 개선<sup>5</sup>
- 6가지 용량  
환자 맞춤형 치료 옵션 제공<sup>3</sup>

**리바로하이®**  
국내 유일\* Pitavastatin 3제 복합제, 당뇨병 위험 징후 없이 혈압·지질 동시 개선하는 최적의 Triple Therapy<sup>1-6</sup>  
\*As of 2025.0812

References 1. Seo WM et al. Cardiovasc Diabetol. 2022;21(1):82. 2. NAVIGATOR Study Group. N Engl J Med. 2010;362(16):1477-1480. 3. 의학용어정보나라  
의약품통합정보시스템 허가사항(리바로하이정2/160/10mg, 리바로하이정2/160/5mg, 리바로하이정4/160/10mg, 리바로하이정4/160/5mg,  
리바로하이정4/80/5mg)(Accessed on Sep. 30, 2025). 4. SmPC of UK. 5. 리바로하이 3상 임상시험. JW Pharmaceutical Data on file. 6. 의학용어정보나라  
의약품통합정보시스템 허가사항(피타바스타틴)(Accessed on Aug. 18, 2025).

\* 보다 상세한 제품 정보는 제품설명서를 참고하십시오.

JWP393-2511002(EXP.2711)

리바로하이정 2/80/5mg(리바스타틴/피타바스타틴/ezetimibe) 발사르탄, 앙로디핀(복합제)	리바로하이정 2/160/5mg(리바스타틴/피타바스타틴/ezetimibe) 발사르탄, 앙로디핀(복합제)	리바로하이정 2/160/10mg(리바스타틴/피타바스타틴/ezetimibe) 발사르탄, 앙로디핀(복합제)	리바로하이정 4/80/5mg(리바스타틴/피타바스타틴/ezetimibe) 발사르탄, 앙로디핀(복합제)	리바로하이정 4/160/5mg(리바스타틴/피타바스타틴/ezetimibe) 발사르탄, 앙로디핀(복합제)	리바로하이정 4/160/10mg(리바스타틴/피타바스타틴/ezetimibe) 발사르탄, 앙로디핀(복합제)

JW 중의제약 JW 신약 경기도 과천시 과천대로 7길 38 (갈현동) JW과천사옥, CCM 운영팀: 1588-2675  
제품에 대한 상세한 내용은 제품 설명서나 본사 홈페이지를 참조하십시오. [www.jw-pharma.co.kr](http://www.jw-pharma.co.kr)



# CLEAR THE PATH



PLT-23C046

항혈소판제 **플라비톨®**은 THE LANCET 등재 연구에 사용된 제품입니다.



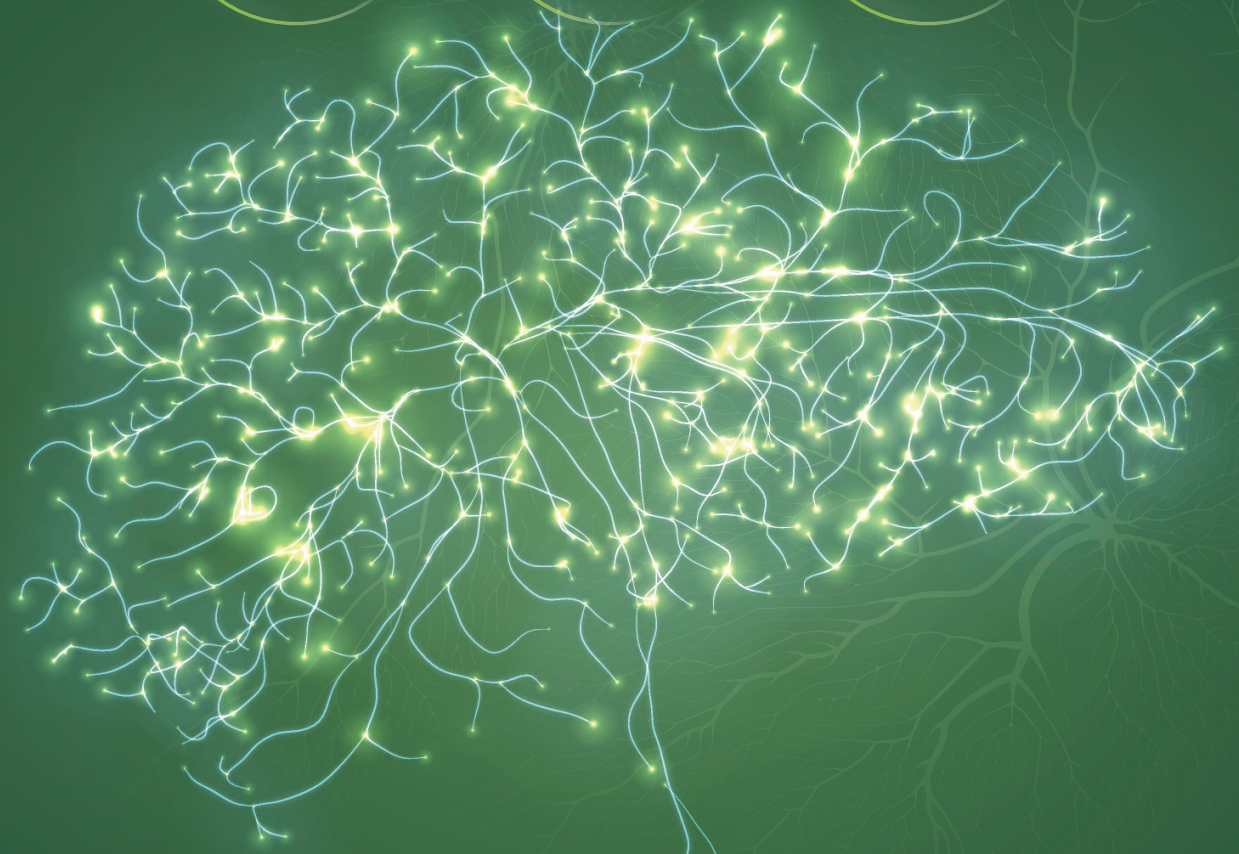
## 엑티라제® 급성 허혈성 뇌졸중 치료 요법<sup>3,7</sup>

급성기 허혈성 뇌졸중(AIS)의 **표준 치료 요법**으로 사용<sup>1,2</sup>  
WHO 필수약품(Essential medicines) 등재<sup>3</sup>

뇌졸중 환자의  
장기 생존률  
유의미한  
개선<sup>4\*</sup>

뇌졸중 환자의  
그 가족의  
삶의 질  
개선<sup>5†,6</sup>

뇌졸중 환자의  
장기적인  
장애를  
감소<sup>5†,6</sup>



\*Propensity score matched cohort study, 738 matched pairs, 10-years follow-up. 1 Study design: In IST-3, done at 156 hospitals in 12 countries (Australia, Europe, and the UK), participants (aged >18 years) were randomly assigned with a telephone voice-activated or web-based system in a 1:1 ratio to treatment with intravenous 0.9 mg/kg alteplase plus standard care or standard care alone within 6 h of ischaemic stroke.  
1. Jenny Simon et al. Acta Neurologica Scandinavica Vol. 2025 2. EMA. Actilyse® (Alteplase) Summary of Product Characteristics. Available at: [www.medicines.org.uk/emc/product/898/smpc](https://www.medicines.org.uk/emc/product/898/smpc) Last accessed January 2024; 3. World Health Organisation. Model List of Essential Medicines. 23rd List. 2023. Available online at: <https://www.who.int/publications/item/WHO-AHP-HP5-EML-2023.02>. Last accessed January 2024; 4. Murrell W, et al. Stroke 2016;49:607-613; 5. Berge E, et al. Lancet Neurol 2016;15:1029-1034; 6. NICE. Alteplase for treating acute ischaemic stroke. NICE Technology Appraisal Guidance [TA 264]. 2012. Available online at: [www.nice.org.uk/guidance/ta264/chapter/4-Consideration-of-the-evidence](https://www.nice.org.uk/guidance/ta264/chapter/4-Consideration-of-the-evidence) Last accessed January 2024; 7. 식품의약품안전처, 엑티라제® 50밀리그램 제형정보(available at <https://nedrug.mfds.go.kr/cdp/CCBB801/getItemDetail?cacheSeq=199504213&updateTs2025-02-21%2013:08:14.0a> accessed on Mar 24, 2025)



※ HCP 대상으로 제작된 홍보물이며 가공 또는 복사 및 배포를 금지합니다.



서울시 중구 동일로 10 연세재단 세브란스빌딩 16층 (04527)  
<http://www.bikr.co.kr> TEL. 080-222-0110



서울특별시 동작구 노량진로 74  
[www.yuhan.co.kr](http://www.yuhan.co.kr)



엑티라제주사  
20밀리그램  
(알테플라제)



엑티라제주사  
50밀리그램  
(알테플라제)

QR코드를 통해 상세 제품정보를 참조하여 주시기 바랍니다

PC-KR-104933(202503)  
KR-THR-200004



# 액티라제® 급성 허혈성 뇌졸중 치료를 위한 혈전용해제<sup>3,4'</sup>

약 30년 동안 급성기 허혈성 뇌졸중의 표준 치료 요법으로 사용<sup>1,2</sup>  
WHO 필수약품(Essential medicines) 등재<sup>4</sup>

- ✓ 뇌졸중 환자의 **장기 생존률 유의미한 개선**<sup>5\*</sup>
- ✓ 뇌졸중 환자 **그 가족의 삶의 질 개선**<sup>6,7</sup>
- ✓ 뇌졸중 환자의 **장기적인 장애를 감소**<sup>6,7</sup>



\*Propensity score matched cohort study, 738 matched pairs, 10-years follow-up.  
1. Abuelazm M, et al. J Thromb Thrombolysis 2023;55:322-338; 2. EMA. Actilyse® (Alteplase) Summary of Product Characteristics. Available at: [www.medicines.org.uk/emc/product/898/smpc](http://www.medicines.org.uk/emc/product/898/smpc) Last accessed January 2024; 3. Yamaguchi T, et al. Stroke 2006;37:1810-1815; 4. World Health Organisation. Model List of Essential Medicines, 23rd List, 2023. Available online at: <https://www.who.int/publications/i/item/WHO-MHP-HPS-EML-2023.02> Last accessed January 2024; 5. Muruet W, et al. Stroke 2018;49:607-613; 6. Berge E, et al. Lancet Neurol 2016;15:1028-1034; 7. NICE. Alteplase for treating acute ischaemic stroke. NICE Technology Appraisal Guidance [TA 264] 2012. Available online at: [www.nice.org.uk/guidance/ta264/chapter/4-Consideration-of-the-evidence](http://www.nice.org.uk/guidance/ta264/chapter/4-Consideration-of-the-evidence) Last accessed January 2024;

※ HCP 대상으로 제작된 홍보물이며 가공 또는 복사 및 배포를 금지합니다.

PC-KR-104932(202502)  
KR-THR-2500003

## for CT and MRI Image Analysis Full-Cycle Stroke Management AI Solutions

MR



JBS-01K (JLK-DWI)    JLK-CMB    JLK- PWI    JLK-LAC    JLK-WMH    JLK-UIA

CT



JLK-CTP    JLK-LVO    JLK-CTL    JLK-ICH    JLK-CTii    JLK-WMHci



# 더 다양해진 신개념 오메가-3

오메가-3 신기술로  
유나이티드합니다

**아트맥 콤비젤** 연질캡슐  
Atorvastatin 5mg, 10mg / Omega-3 1g

**로수맥 콤비젤** 연질캡슐  
Rosuvastatin 5mg, 10mg / Omega-3 1g

**오메틸** 큐티렛 2g  
Omega-3-acid ethyl esters 90 2g

## HEURON StroCare Suite™

Comprehensive Stroke Triage AI Solution

### Faster Triage, Prompt Actions Because Time Matters.



HEURON

10F, C, 150, Yeongdeungpo-ro, Yeongdeungpo-gu, Seoul, 07292, Rep. of Korea  
T. +82-2-2633-8595 | E. heuron@iheuron.com | H. www.iheuron.com  
©2025. Heuron Co., Ltd. All rights reserved.  
Heuron-AD-StroCare2-02E(02)



Scan to Connect and  
Discover More





---

Joint Conference of 2025 International Conference Stroke Update  
and International Conference on Intracranial Atherosclerosis



**Korean Stroke Society**

TEL : 050-2277-1919 E-mail: [stroke@stroke.or.kr](mailto:stroke@stroke.or.kr) Website: [www.stroke.or.kr](http://www.stroke.or.kr)